

Sugar Hill Trail Concept Livable Centers Initiative

Core Team Meeting #1 | June 23, 2020



Agenda

Meet	10 min	Welcome, introductions, and core team responsibilities
Inform	10 min	Project background, goals, and schedule
	25 min	Existing conditions analysis highlights
Listen	20 min	Vision discussion
	20 min	SWOT discussion
Close	5 min	Wrap-up and next steps



01

Welcome

Introductions and Core Team Responsibilities



10 min.



Introductions

Project Team



Kaipo Awana
*Planning Director,
City of Sugar Hill*



Addie Weber
*Project Manager,
Toole Design*



Blake Loudermilk
*Engineering Lead,
Toole Design*



Meghan McMullen
*Engagement Lead,
Toole Design*

Introductions



Purpose

1. Share community insight
2. Coordinate/collaborate
3. Give feedback on draft concepts
4. Connect to your networks

Staff, elected officials, partner agencies, neighbors, and businesses

People

Introductions

Core Team

Jared Lombard

Senior Planner, Atlanta Regional Commission

Brandon Hembree

Councilmember, City of Sugar Hill

Troy Besseche

Assistant City Manager, City of Sugar Hill

Vince Edwards

Gwinnett County Department of Transportation

Bobby McGraw

Executive Pastor, Sugar Hill Church

Jeff Coleman

Senior Pastor, Church on the Hill

Julie Adams

Vice Chair, Sugar Hill Planning Commission

Kami Clements

Marketing and Communications Coordinator, City of Sugar Hill

Joel Hoffman

Creative Content Coordinator, City of Sugar Hill

Kristen Petillo

Neighbor and runner

Jay Petillo

Neighbor and runner

Megan Mendez

Neighbor

Format



Speak up

Jump in!



Chat box

Go to www.menti.com and use the code 25 21 46

 Mentimeter

Which trail activity is your favorite?

0



Walking/Running

0



Biking

0



Skateboarding

0



People watching

0



Project Background, Goals, and Schedule

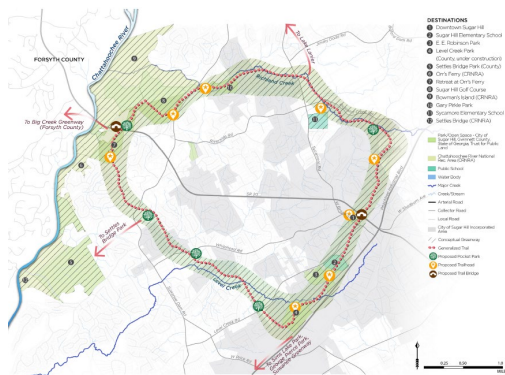
02



10 min.



Project Background



Sugar Hill SR 20
Corridor Study



Sugar Hill Downtown
Master Plan LCI

GDOT SR 20
Widening Project



Pedestrian/
Bike
Bridge

2016

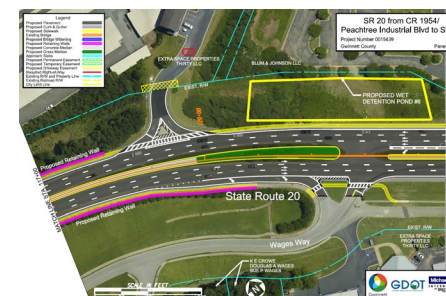
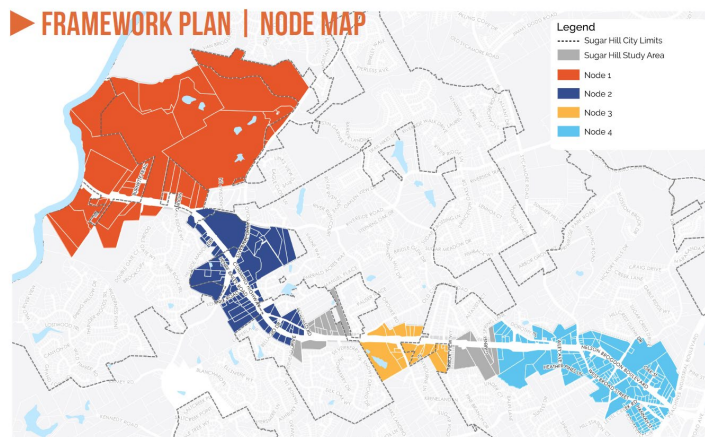
2018

2018

2019

2020

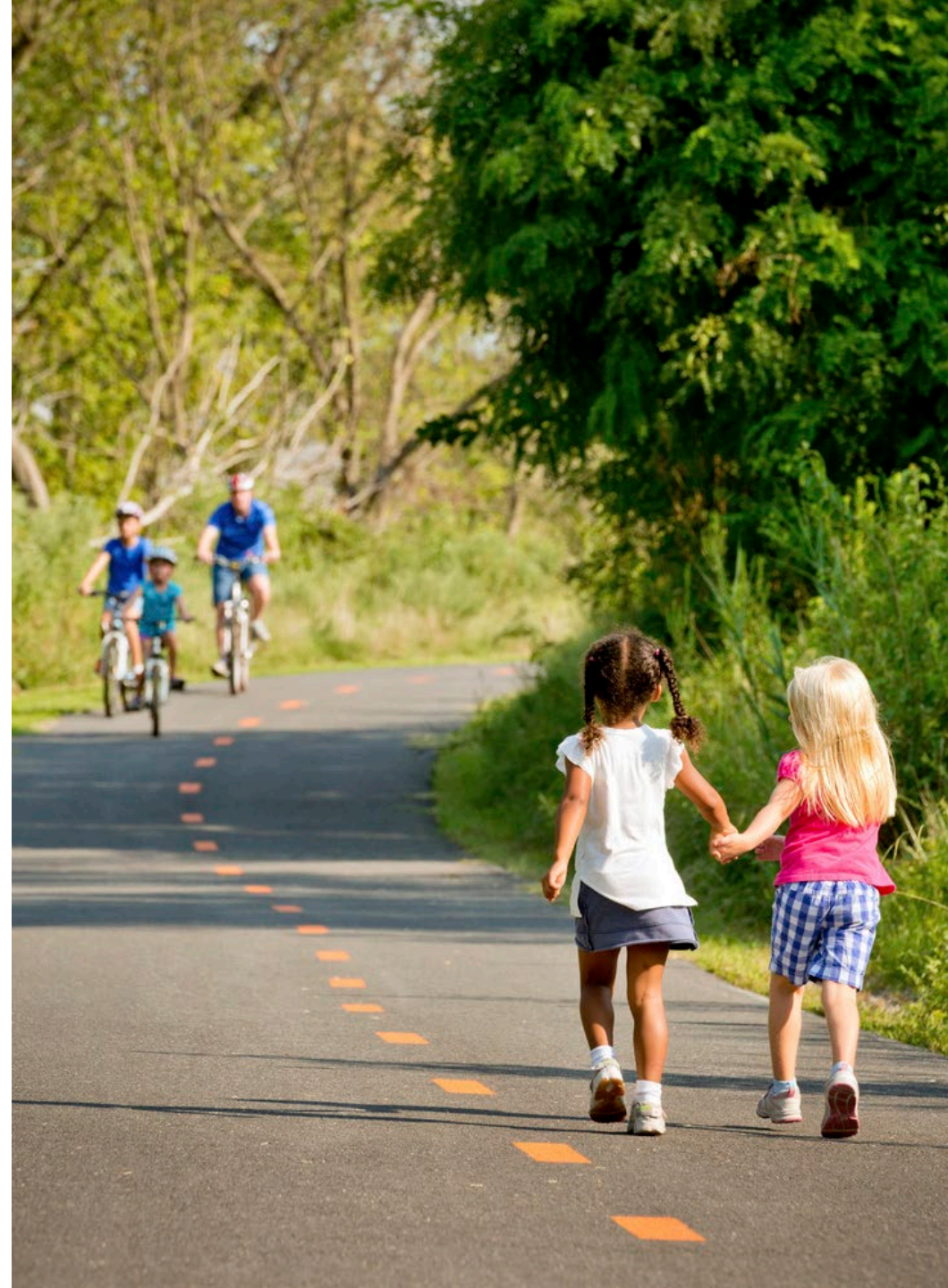
Sugar Loop
Greenway Master
Plan



Guiding Principles

We will develop a **signature trail** amenity for Sugar Hill by:

1. Designing a **safe and comfortable** facility for users of all ages and abilities
2. Connecting community facilities and other useful **destinations**
3. Maximizing access to **nature**
4. Using existing **public land and ROW** as much as possible



Facility Use: Who and How

BICYCLIST DESIGN USER PROFILES

Interested but Concerned

51-56% of the total population

Often not comfortable with bike lanes, may bike on sidewalks even if bike lanes are provided; prefer off-street or separated bicycle facilities or quiet or traffic-calmed residential roads. May not bike at all if bicycle facilities do not meet needs for perceived comfort.

Somewhat Confident

5-9% of the total population

Generally prefer more separated facilities, but are comfortable riding in bicycle lanes or on paved shoulders if need be.

Highly Confident

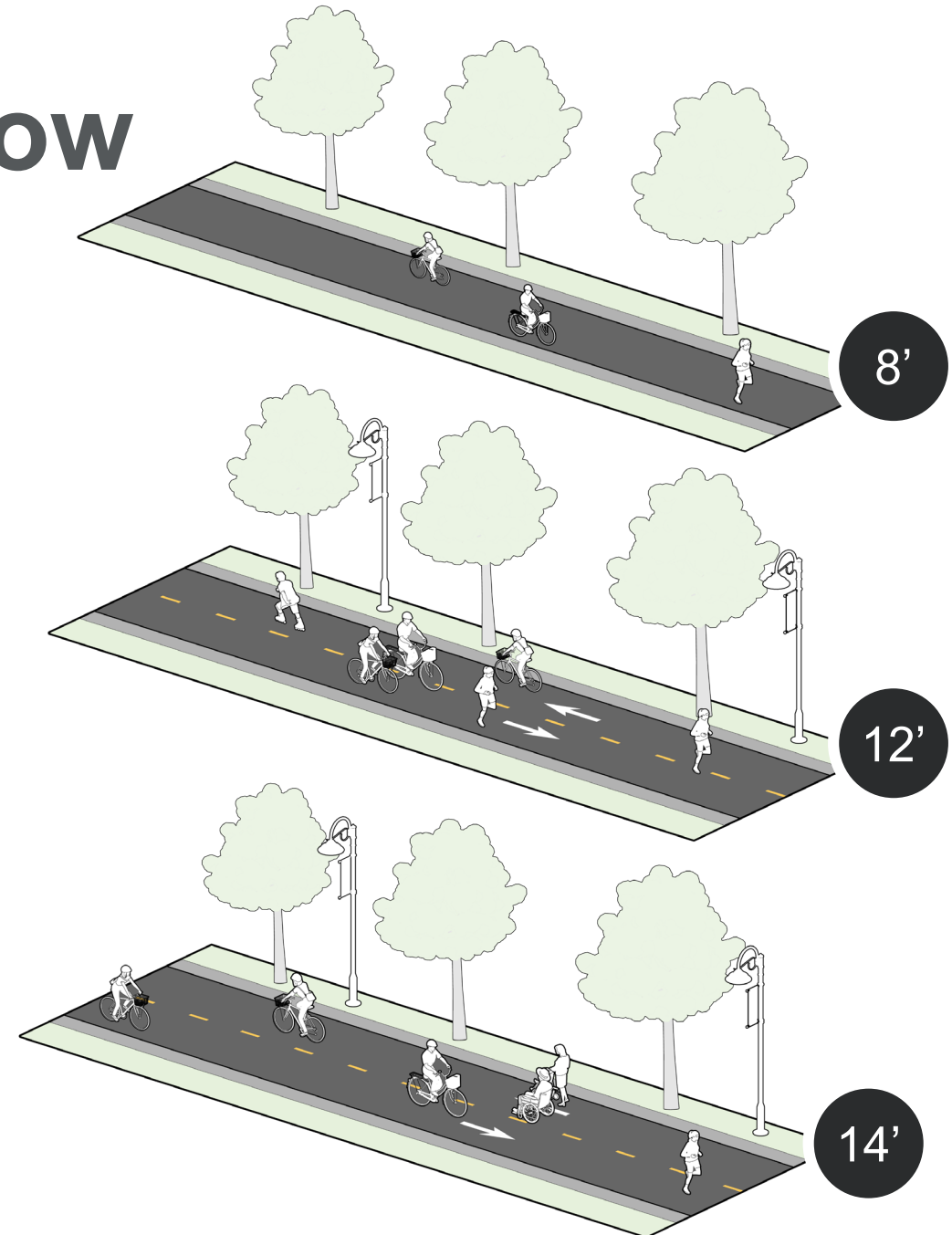
4-7% of the total population

Comfortable riding with traffic; will use roads without bike lanes.



**LOW STRESS
TOLERANCE**

**HIGH STRESS
TOLERANCE**



Low-Stress System Design



Safety



Comfort



Connectivity



Legibility

When we say “Sugar Hill Greenway”...



Trail

Side Path

10- to 14-foot Shared Use Paths



Sidewalk

Buffered Bike Lane

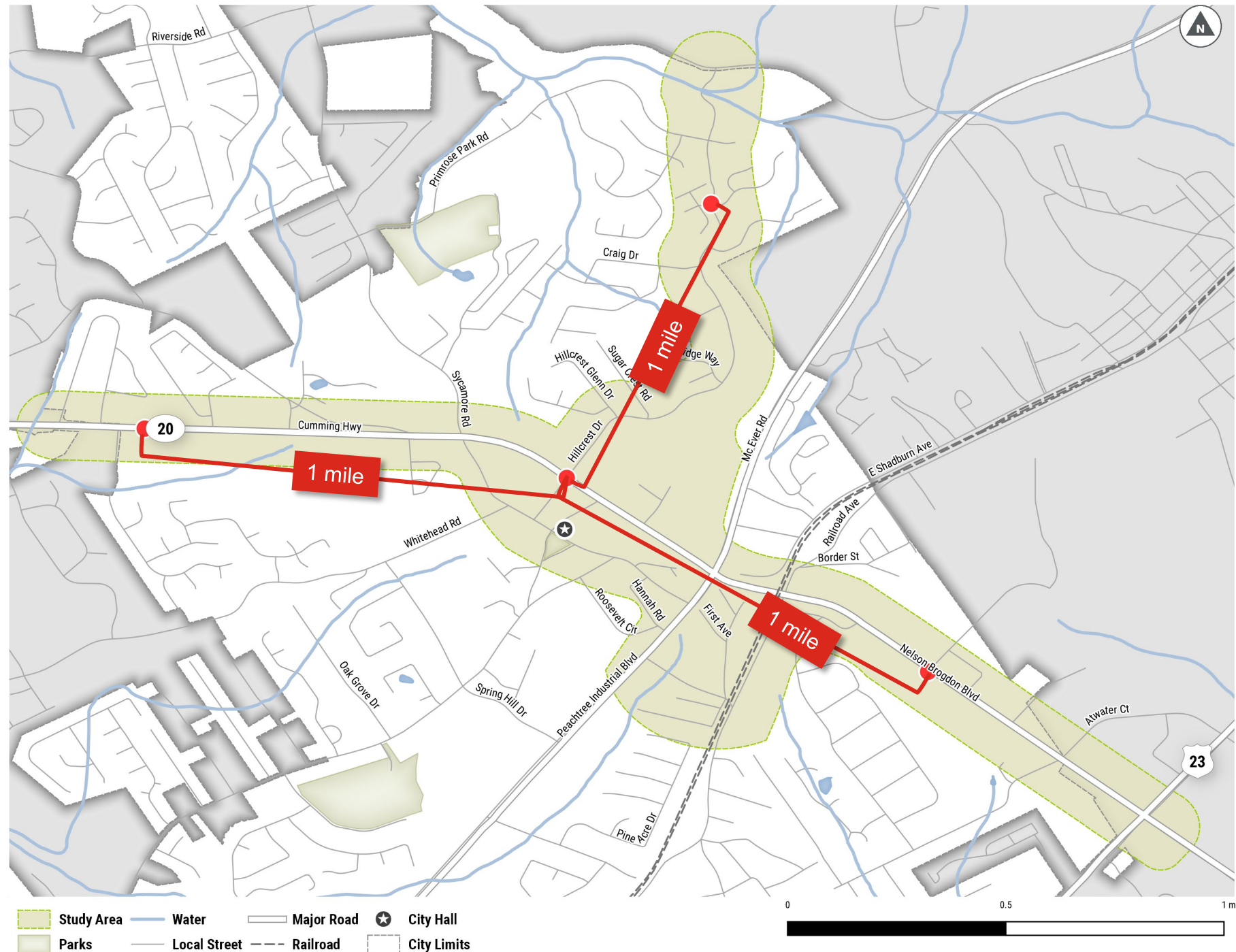


Bike Lane

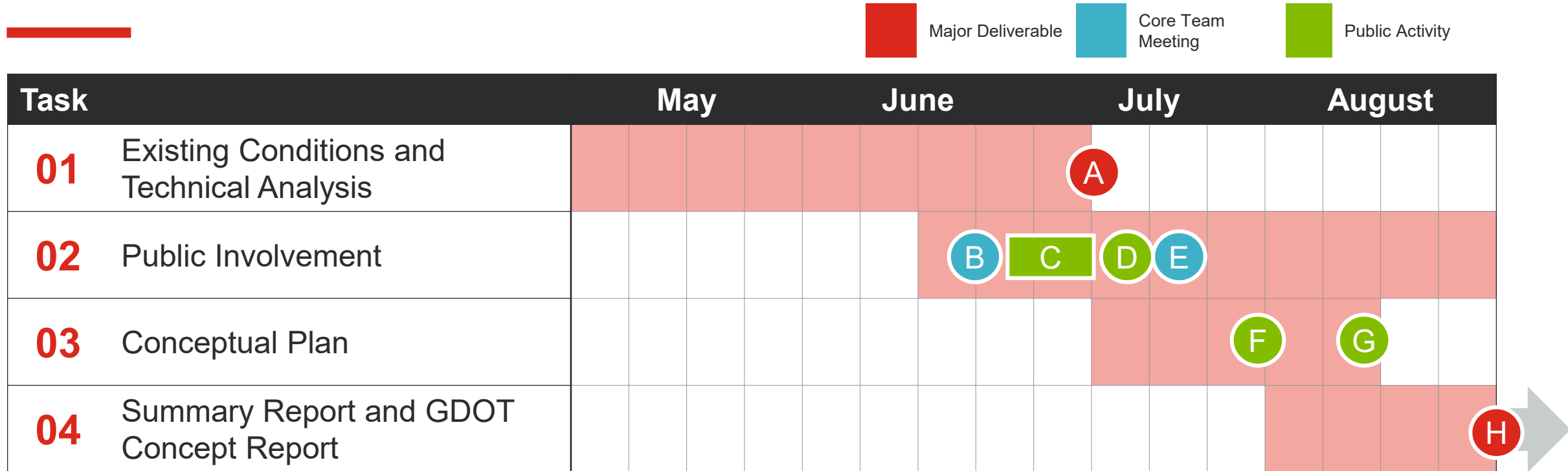
Bike Boulevard

Project Scope

- **Analyze** existing conditions
- **Engage** with the community
- Select a preferred **alignment**
- Develop a **conceptual design**
- Prepare a **GDOT Concept Report**



Schedule



A. Existing Conditions Report and Video (July 10)

B. Core Team Meeting #1 (June 23)

C. WikiMap (June 29 – July 17)

D. Virtual Open House #1 (July 15)

E. Core Team Meeting #2 (July 22)

F. Alternative Concepts Video and Survey (July 27 – August 2)

G. Open House #2 (August 13)

H. Final Draft Deliverables (August 31)

Existing Conditions Analysis Highlights

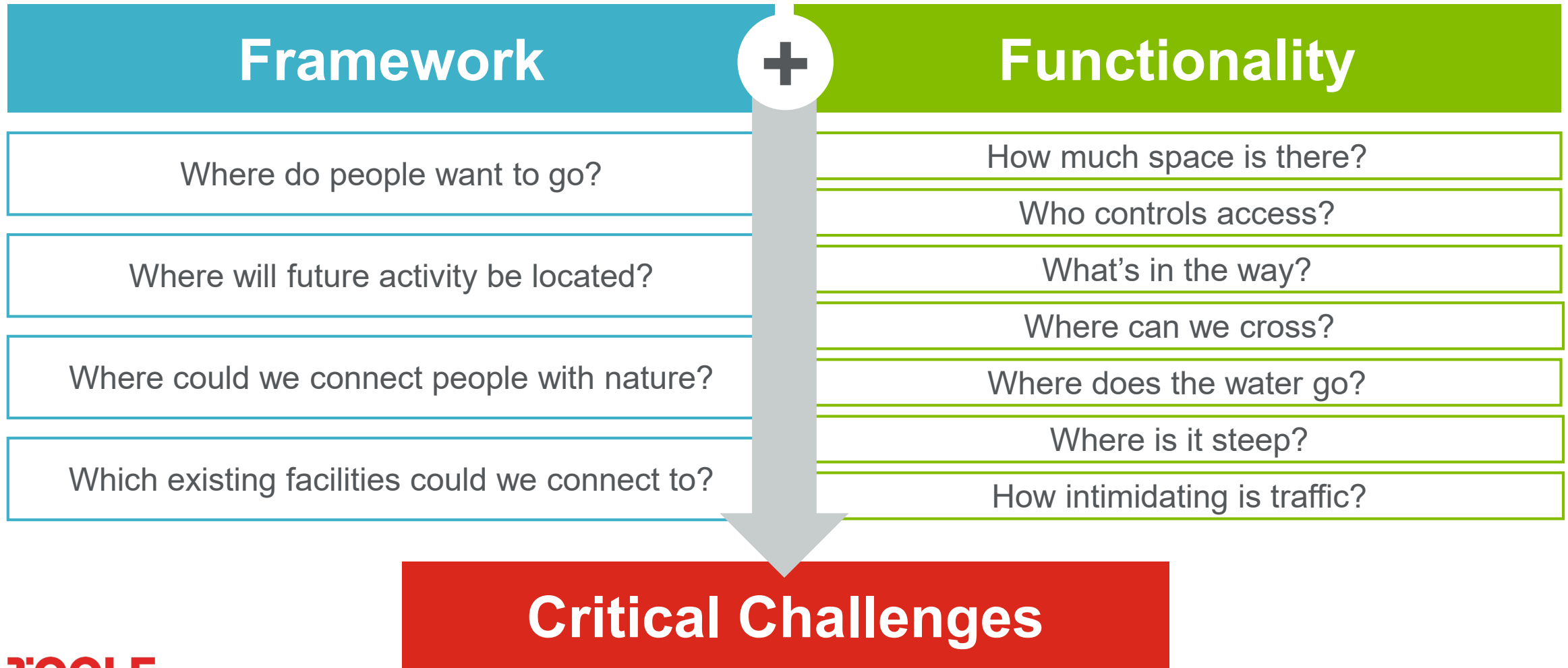


25 min.

03

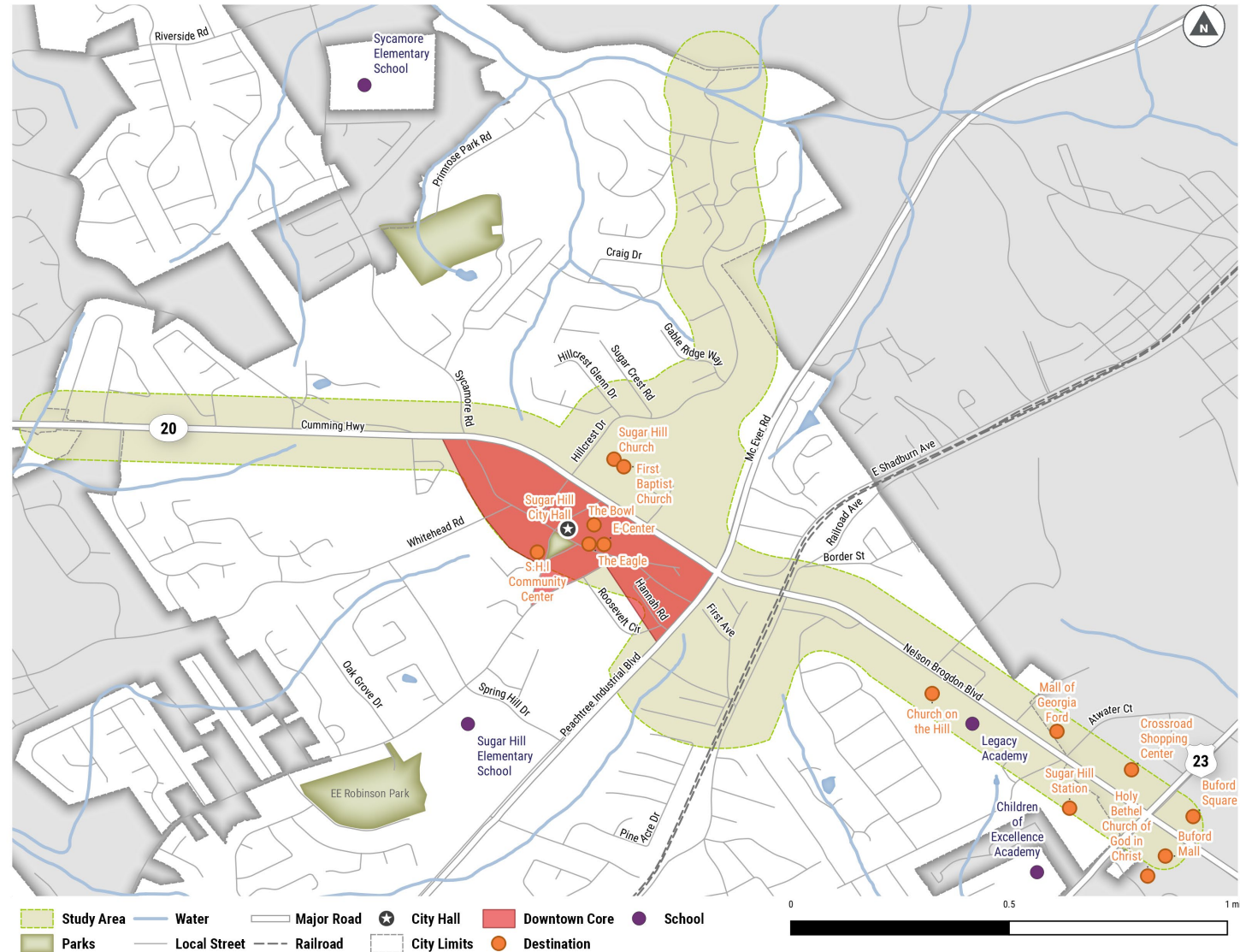


Existing Conditions Analysis



Where do people want to go?

- Downtown
- Shopping plazas at SR 20/Buford Hwy
- EE Robinson Park
- Sugar Hill ES
- Sycamore ES
- Places of worship
- Home



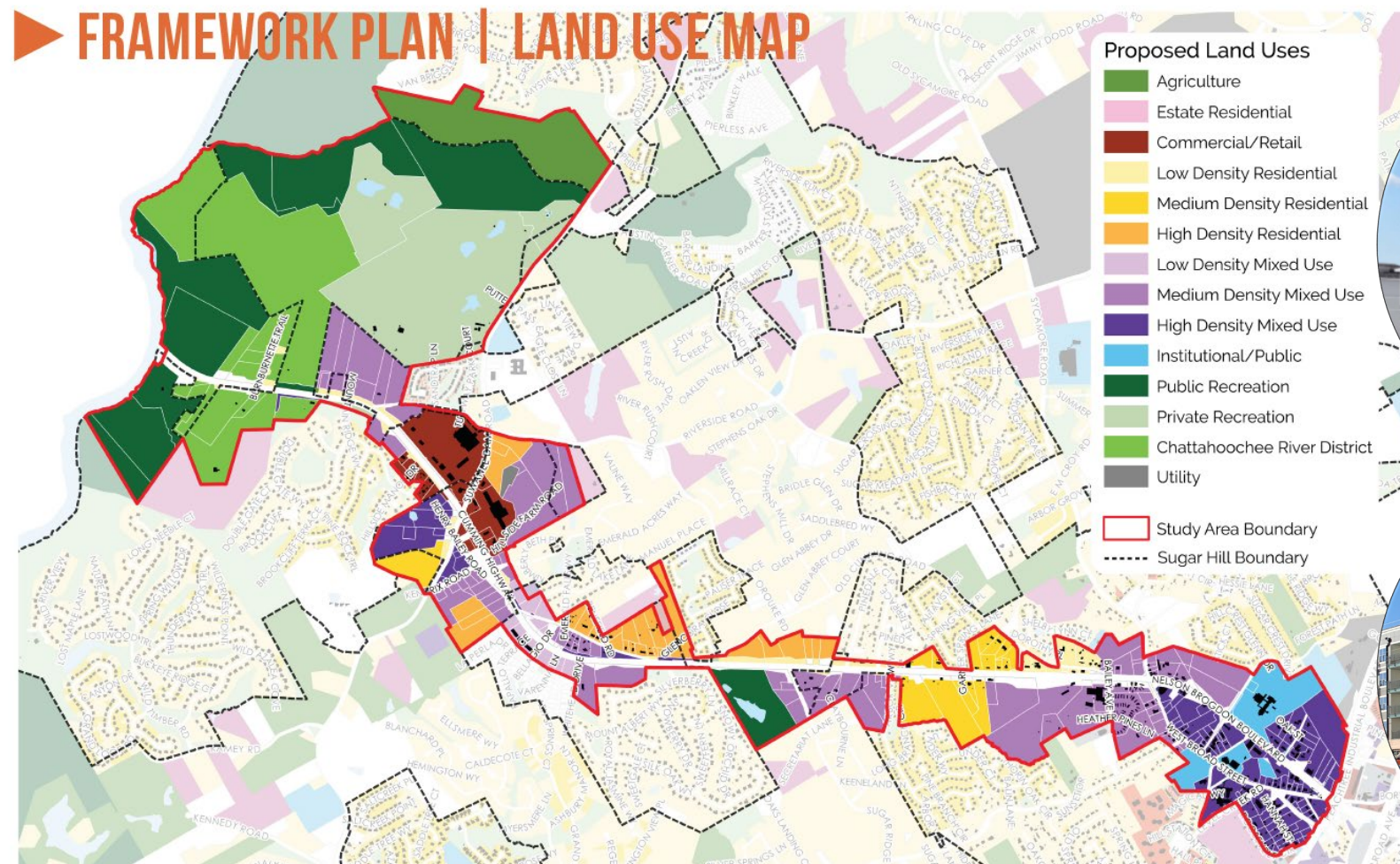
Where will future activity be located?

■ Known

- Downtown apartments
- The Bower
- Senior living on Broad St

■ Desired

- Downtown growth



From SR 20 Corridor Study

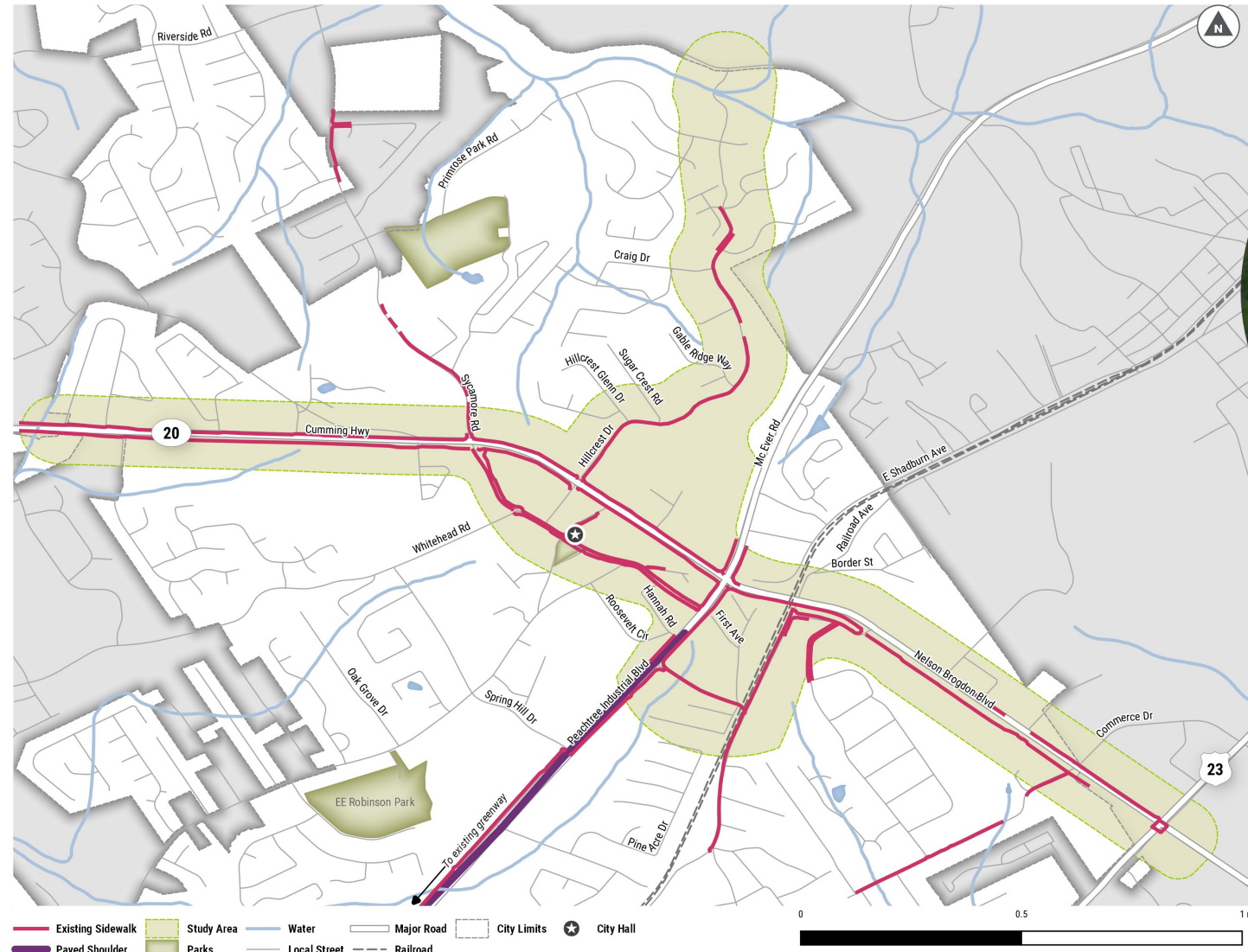
Where could we connect people with nature?

- Newly dedicated parcel near Richland Creek
- 25-foot stream buffer
- Undeveloped parcels



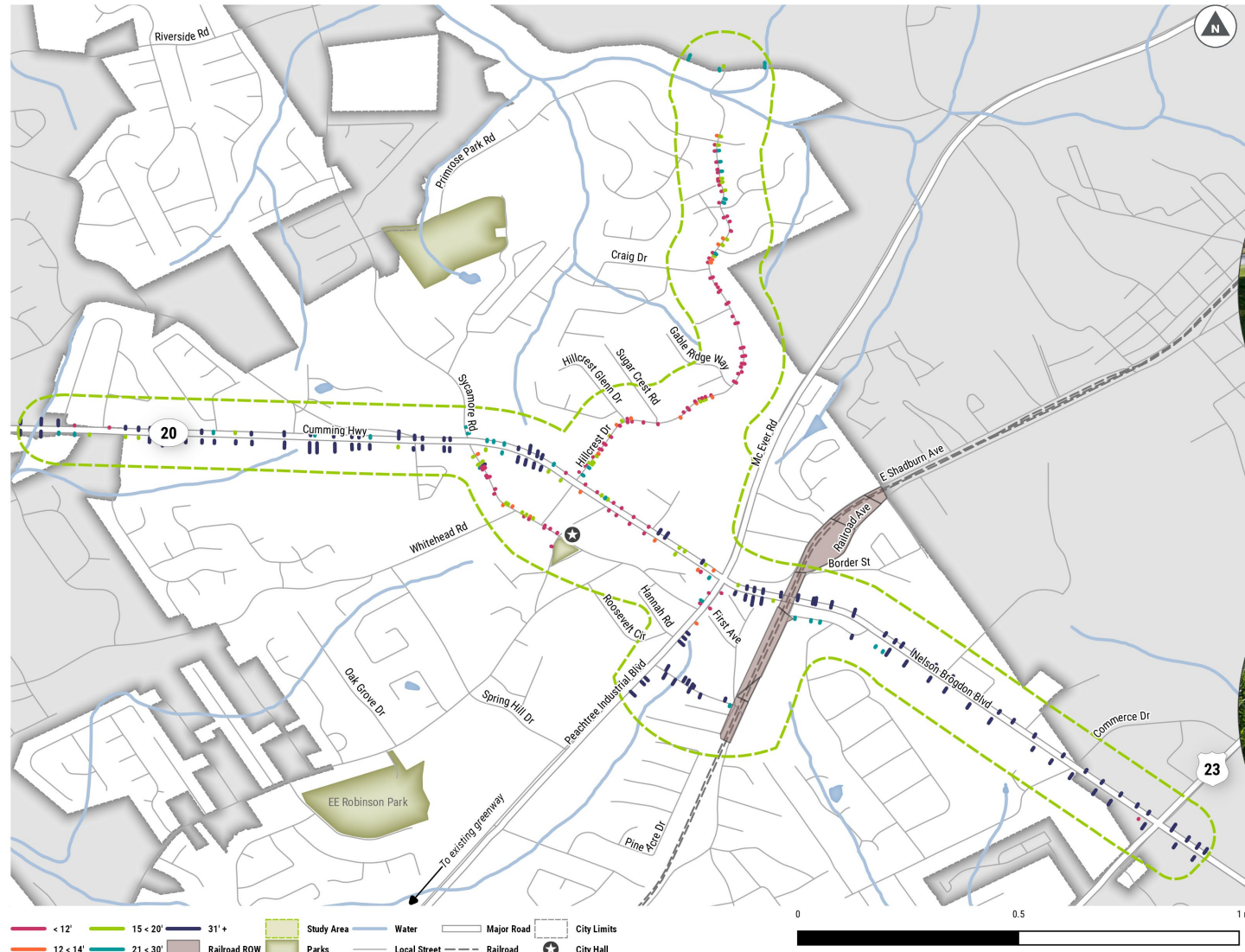
Which existing facilities could we connect to?

- Greenway segments on Peachtree Industrial Boulevard to the south
- Shoulder on Peachtree Industrial Boulevard
- No directly connecting bike facilities



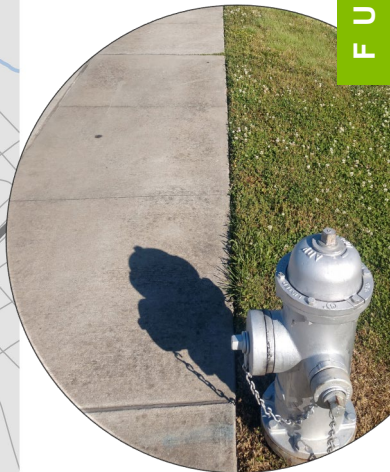
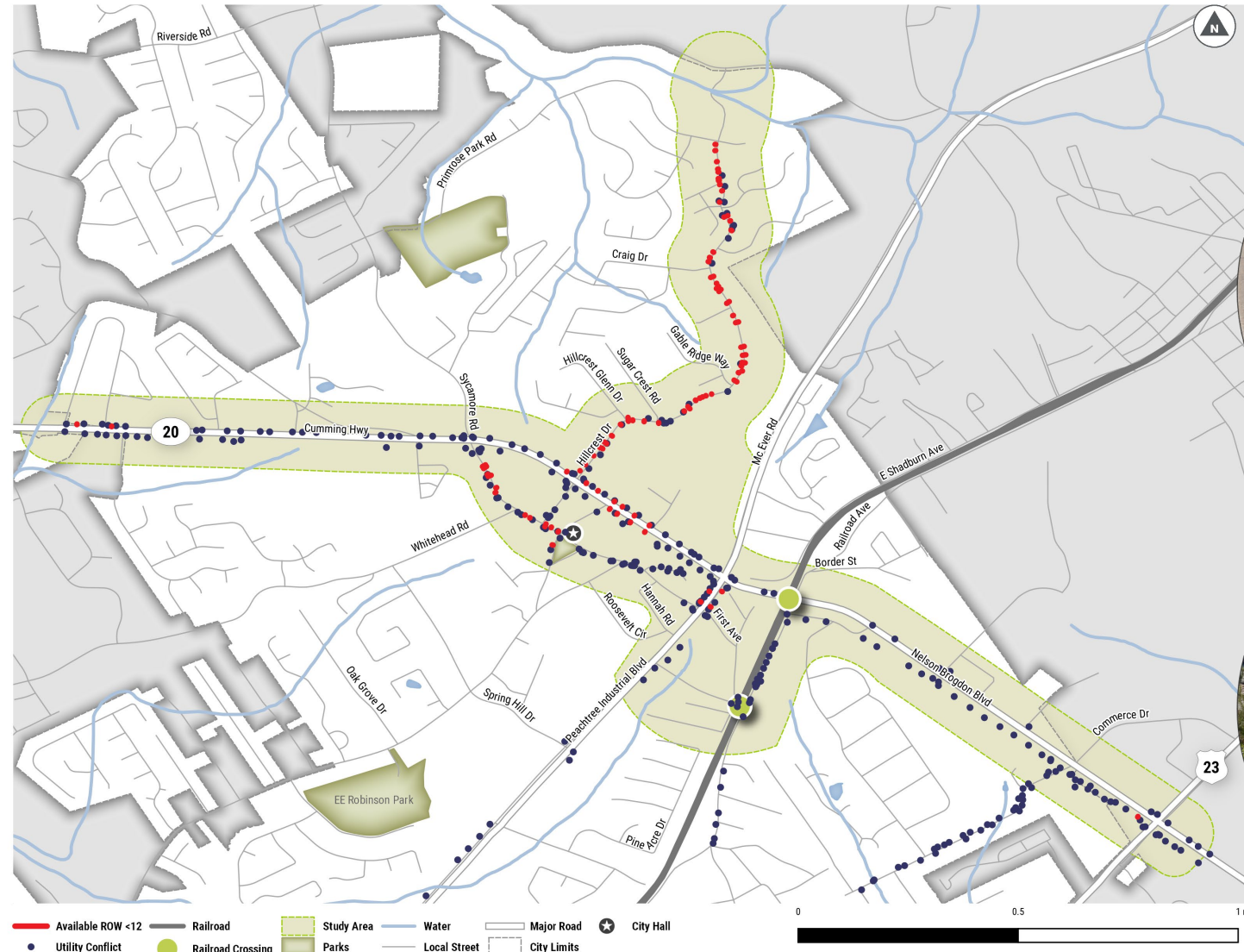
How much space is there?

- Available ROW varies
- Constrained locations:
 - *Broad St/Alton Tucker St*
 - *Railroad Ave*
 - *Hillcrest Dr*
 - *SR 20 (Hillcrest Dr to PIB)*
 - *PIB (SR 20 to Alton Tucker Blvd)*



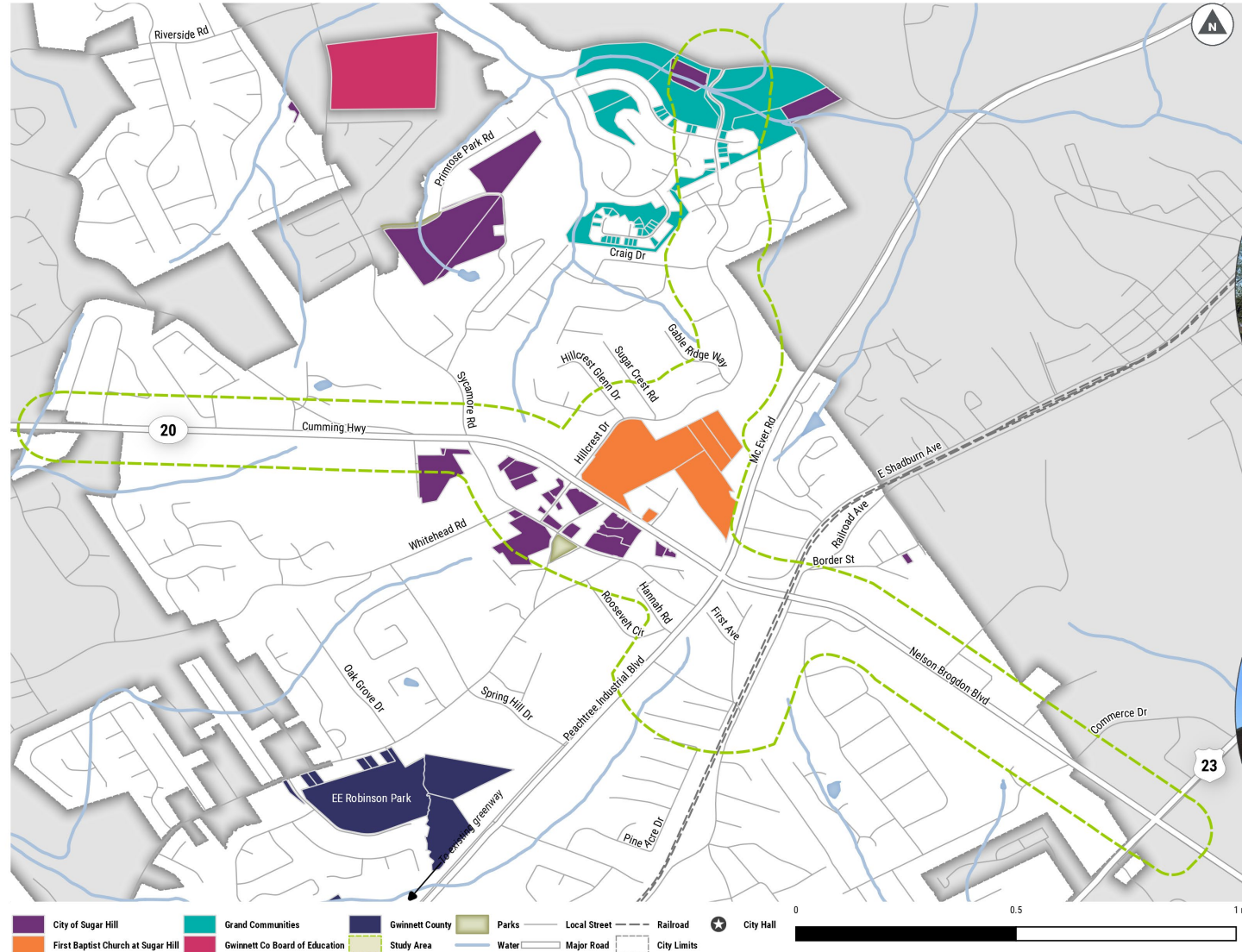
What's in the way?

- Railroad
- Utilities
- Fire hydrants
- Narrow ROW (< 12')
- Hillcrest Dr
- Downtown



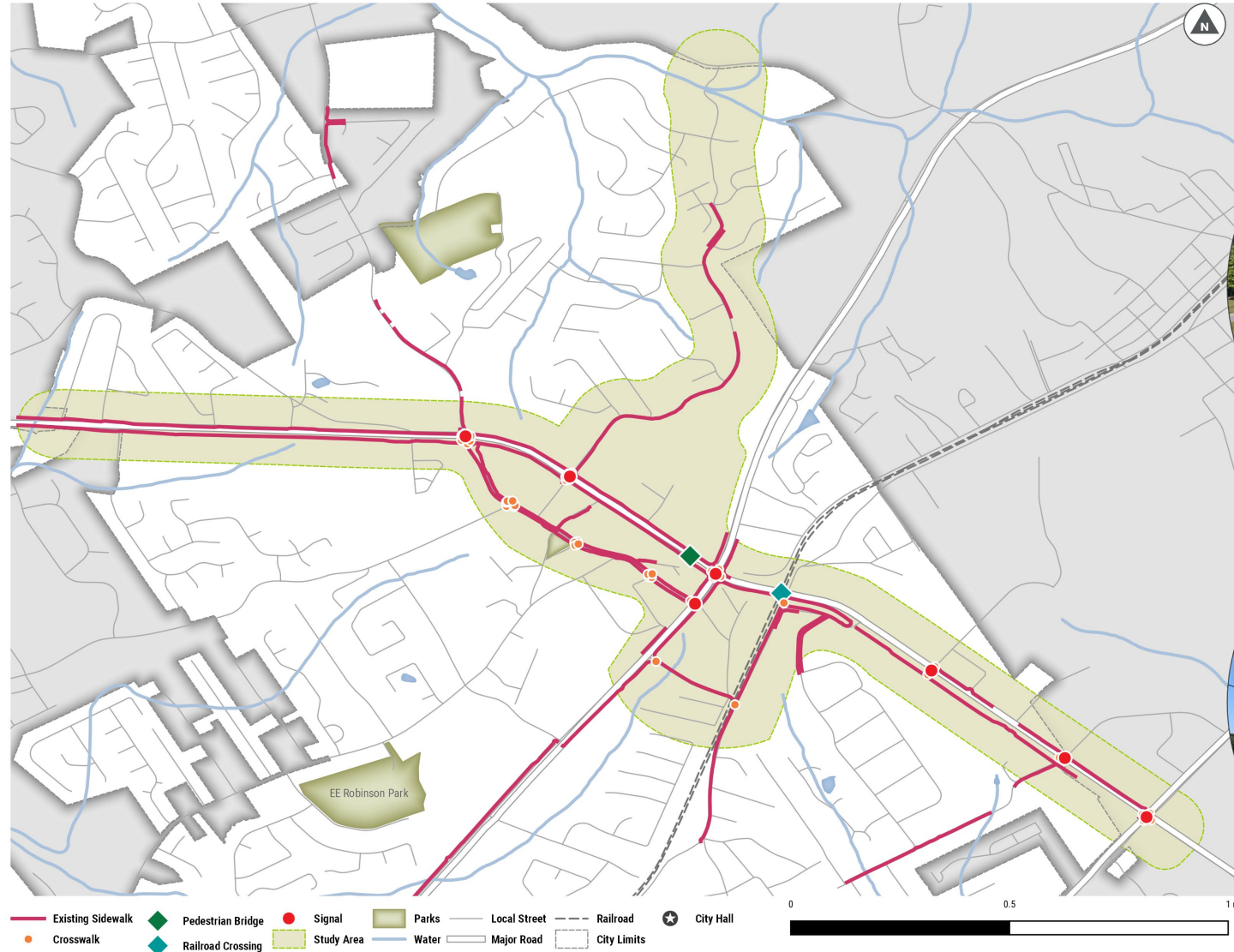
Who controls access?

- GDOT
- City of Sugar Hill
- Norfolk Southern
- Major property owners:
 - Grand Communities
 - Sugar Hill Church
 - The Church on the Hill



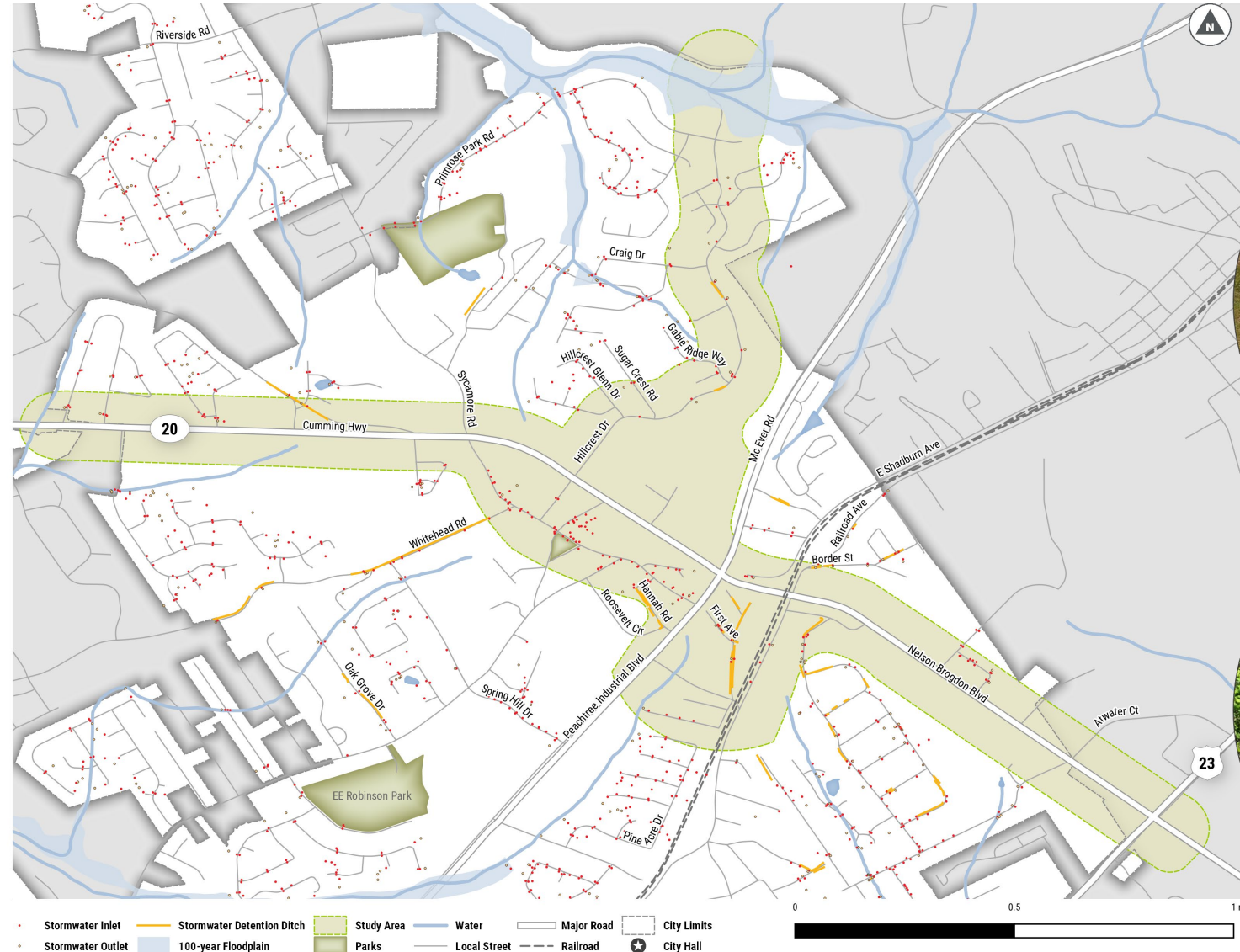
Where can we cross?

- Few crossings on SR 20 (2.3 miles on west end)
- Few crossings on Hillcrest Dr
- Few rail crossings (PIB bridge and 1st Ave at grade)
- Major intersections:
 - SR 20 and PIB
 - SR 20 and Buford Hwy



Where does the water go?

- Stormwater drains
- Creeks
- Retention/detention areas
- 100-year floodplain



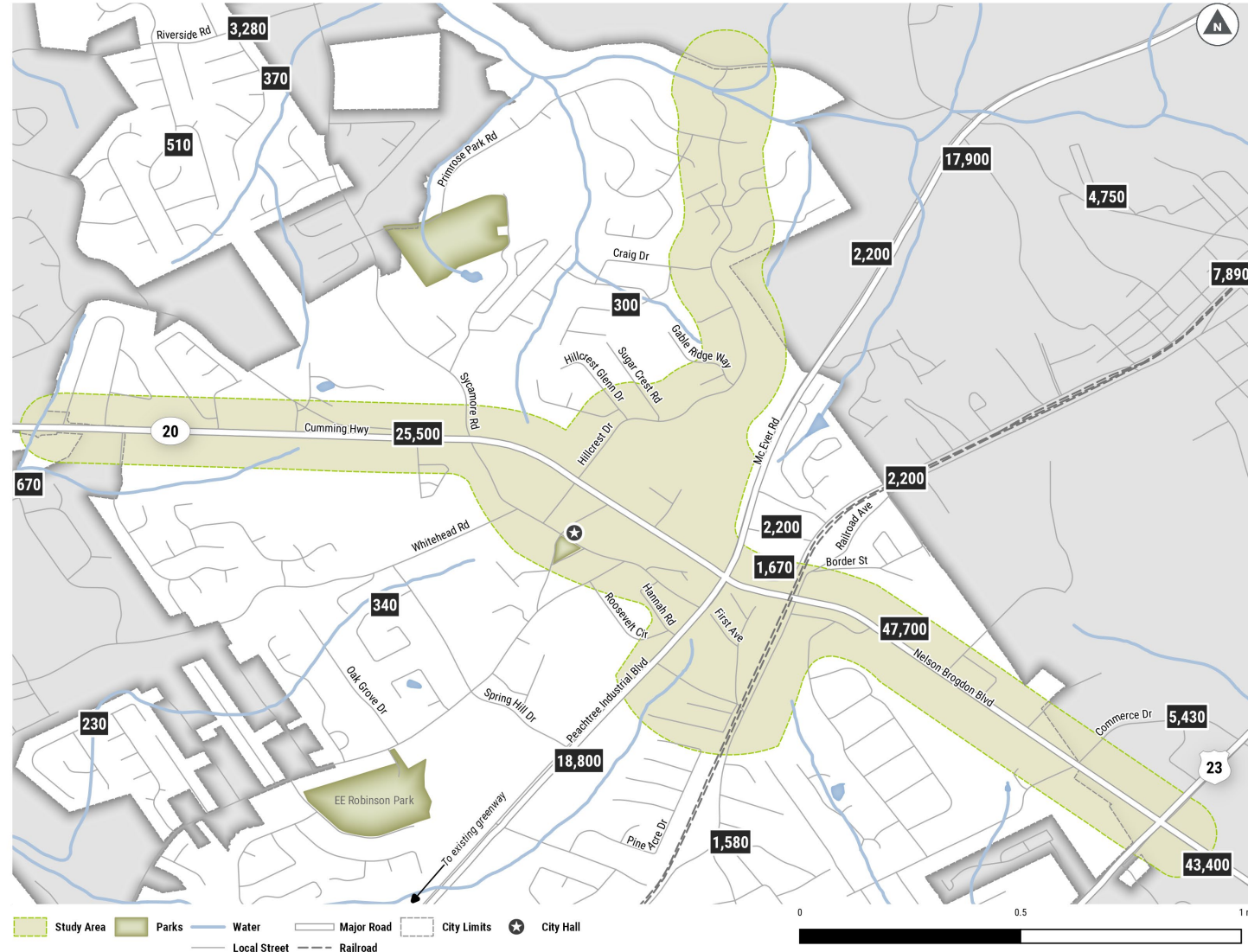
Where is it steep?

- North end of Hillcrest Dr
- SR 20 east (creeks and retaining walls)



How intimidating is traffic?

- High speeds, volumes, and truck traffic on SR 20
- Lower speeds and volumes with fewer trucks on neighborhood streets like Broad St, Hillcrest Dr, Wages Way



Critical Challenges: SR 20 West

- High traffic volumes and speeds
- Narrow ROW
- Creeks, ditches, and drainage
- Limited crossings



Critical Challenges: Hillcrest Drive

- Hillcrest Dr intersection
- Steep slope between Shire Village Dr and Primrose Park Rd
- Narrow ROW sections
- Topography near Richland Creek
- Stormwater and utility conflicts



Critical Challenges: Downtown

- Narrow ROW
- Side street conflict points
- On-street parking
- Relatively new streetscape
- Ped bridge integration
- Alton Tucker Blvd/Peachtree Industrial Blvd intersection



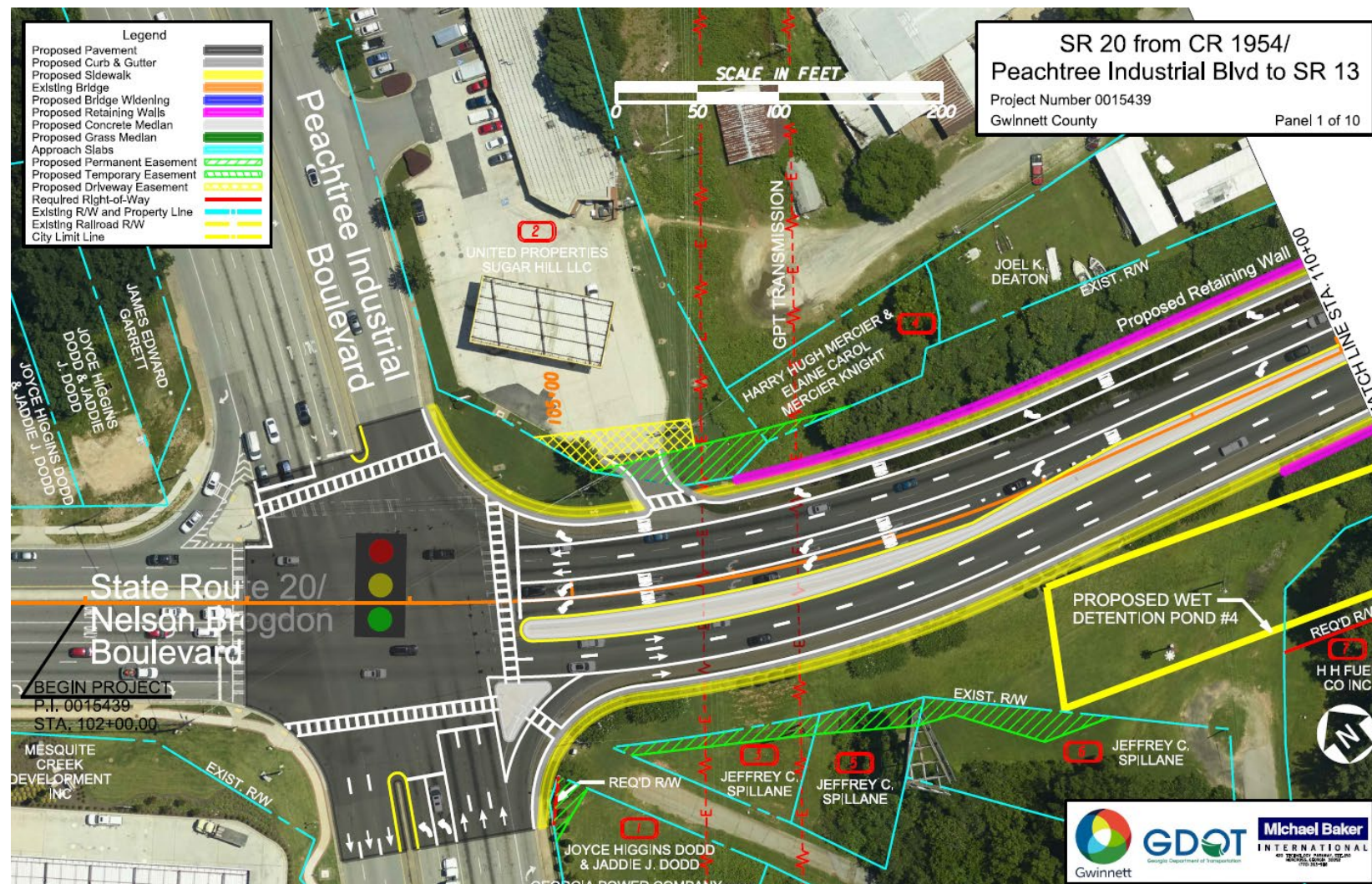
Critical Challenges: SR 20 East

- Bridge/ railroad crossing
- GDOT coordination
- Peachtree Industrial Blvd intersection
- Frontier Dr sight lines
- High traffic volumes and speeds



CRITICAL CHALLENGES

- TOOLE**
DESIGN



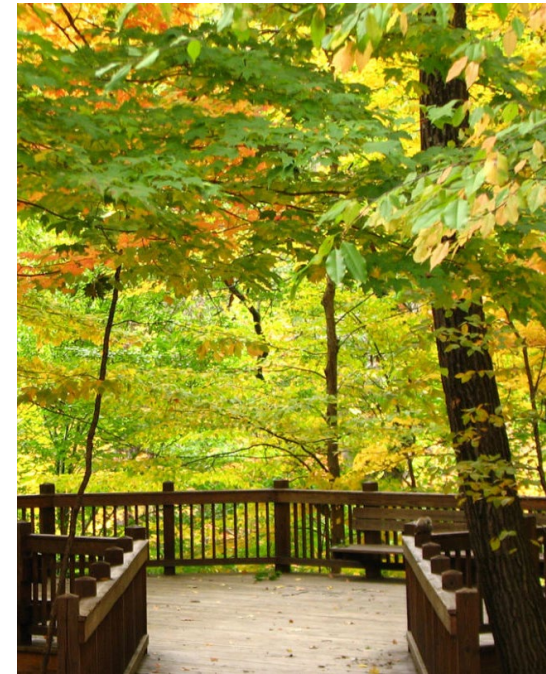
Vision Discussion



20 min.



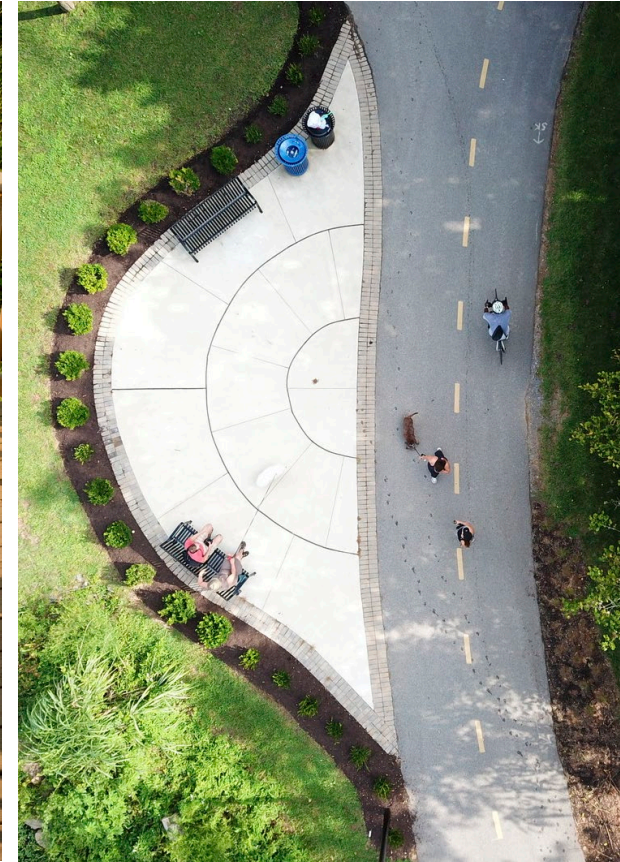
Which greenway elements are most exciting to you? Concerning?



Which greenway elements are most exciting to you? Concerning?



Which greenway elements are most exciting to you? Concerning?



Which greenway elements are most exciting to you? Concerning?



... add
your own!

**What outcome would
make you consider this
project a success?**

SWOT Discussion



20 min.



Strengths



Existing
Downtown
destinations



Natural beauty
at Richland
Creek



Sections with
available right-
of-way (ROW)



Publicly-
controlled land
near route

What other strengths should we leverage?

Go to www.menti.com and use the code 25 21 46

 Mentimeter

What other strengths should we leverage?

Press ENTER to pause scroll



Weaknesses



Railroad crossing



Uncomfortable environment
(high speeds, truck traffic, lack of shade, limited buffer)



Constrained ROW in some locations and preference not to acquire ROW



Natural features/topography



Limited existing destinations and connecting facilities

What other weaknesses do we need to address?

What other weaknesses do we need to address?

Opportunities



Bring people to
Downtown events
by foot or bike



Use greenspace as
anchor destinations



Use parallel
neighborhood
streets or off-street
connections to
improve comfort
and safety



Reinforce Sugar
Hill character
through design

What other opportunities can we maximize?

Go to www.menti.com and use the code 25 21 46

 Mentimeter

What other opportunities can we maximize?

0



Threats



Difficulty
and/or
expense
obtaining
necessary
ROW



Need for
cooperation
from Norfolk
Southern and
GDOT



Challenges
relocating
utilities, fire
hydrants, etc.



Constrained
funding
sources due
to economic
crisis



Potential
opposition
from
neighbors

What other threats should we prepare for?

Go to www.menti.com and use the code 25 21 46

 Mentimeter

What other threats should we prepare for?

Press ENTER to pause scroll

0


**What challenge do you
think is most critical to
address?**

Wrap-up and Next Steps



5 min.

06



Next Steps



Spread the Word

- How can we best reach the community?
 - WikiMap: June 29th
 - Virtual Open House: July 15th



Next Core Team Meeting

Date: July 22nd

Topics:

- Community feedback update
- Preferred alignment
- Design elements

Format: Zoom or outdoor meeting?

Contact

Please contact Meghan with any ideas or follow-up questions.



Meghan McMullen

Engagement Lead, Toole Design

mmcmullen@tooledesign.com

470-800-9525 x670