

SUGAR HILL GREENWAY

Livable Centers Initiative

Virtual Open House | July 15, 2020 | 2 to 3 pm



T'OOLE
DESIGN



@CityofSugarHill
cityofsugarhill.com
/sugarhilltrail

Introductions

Project Team and Presenters



**Kaipō
Awana**

*Planning Director,
City of Sugar Hill*



**Addie
Weber**

*Project Manager,
Toole Design*



**Blake
Loudermilk**

*Engineering Lead,
Toole Design*



**Jeff
Ciabotti**

*Principal in Charge,
Toole Design*



**Ashley
Gunderson**

*Engineer,
Toole Design*



**Meghan
McMullen**

*Engagement Lead,
Toole Design*



TOOLE
DESIGN

Agenda

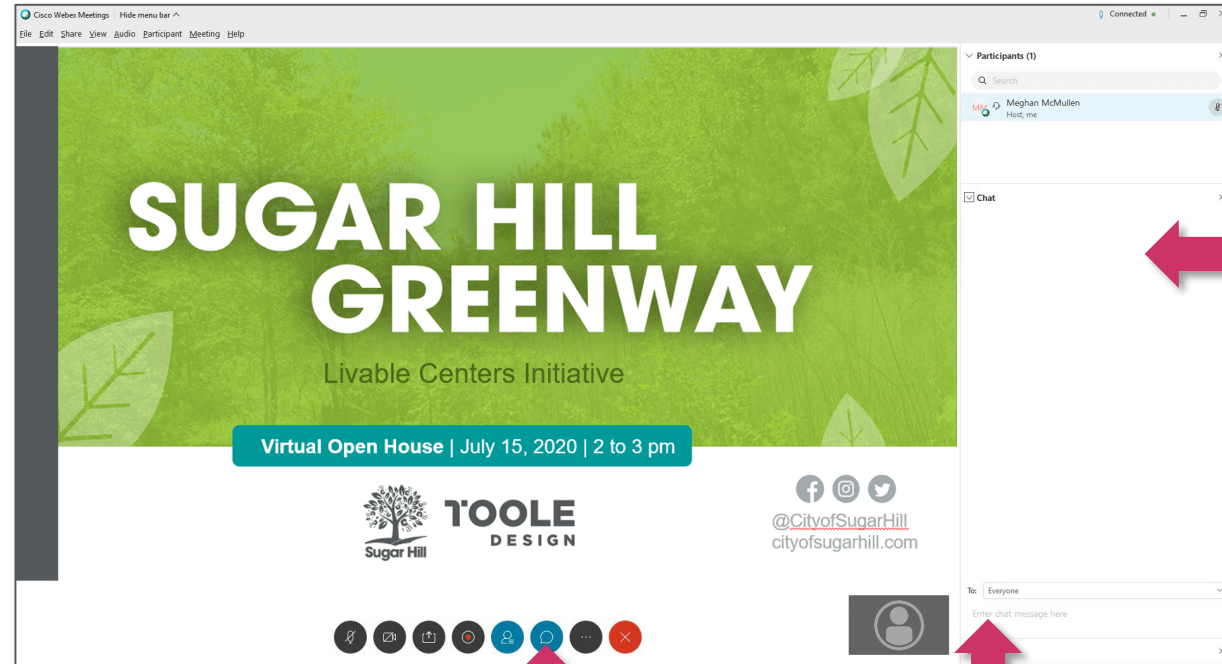
Welcome	6 min
Greenway Benefits & Features	7 min
Project Segment Analysis	24 min
Q&A	15 min
Community Input Map Tutorial	5 min
Wrap-up & Next Steps	3 min



How to Participate



Submit your
questions and
comments in the
chat box!



① Click to **open** chat box, if hidden.

② **Type** your
comments here
and hit “enter” to
send.

③ **Read**
comments
here in the
chat box.



TOOLE
DESIGN

*Please note: participants have been muted for this call.
To participate in poll questions, have your phone ready!*



After This Call



Q&A responses
will be posted to
[cityofsugarhill.com/
sugarhilltrail](http://cityofsugarhill.com/sugarhilltrail)



Complete the
Community Input Map
at [wikimapping.com/
sugarhillgreenway1.html](http://wikimapping.com/sugarhillgreenway1.html)



You will receive **project updates** if you shared your email address

These links will be shown again at the end of the presentation for reference.

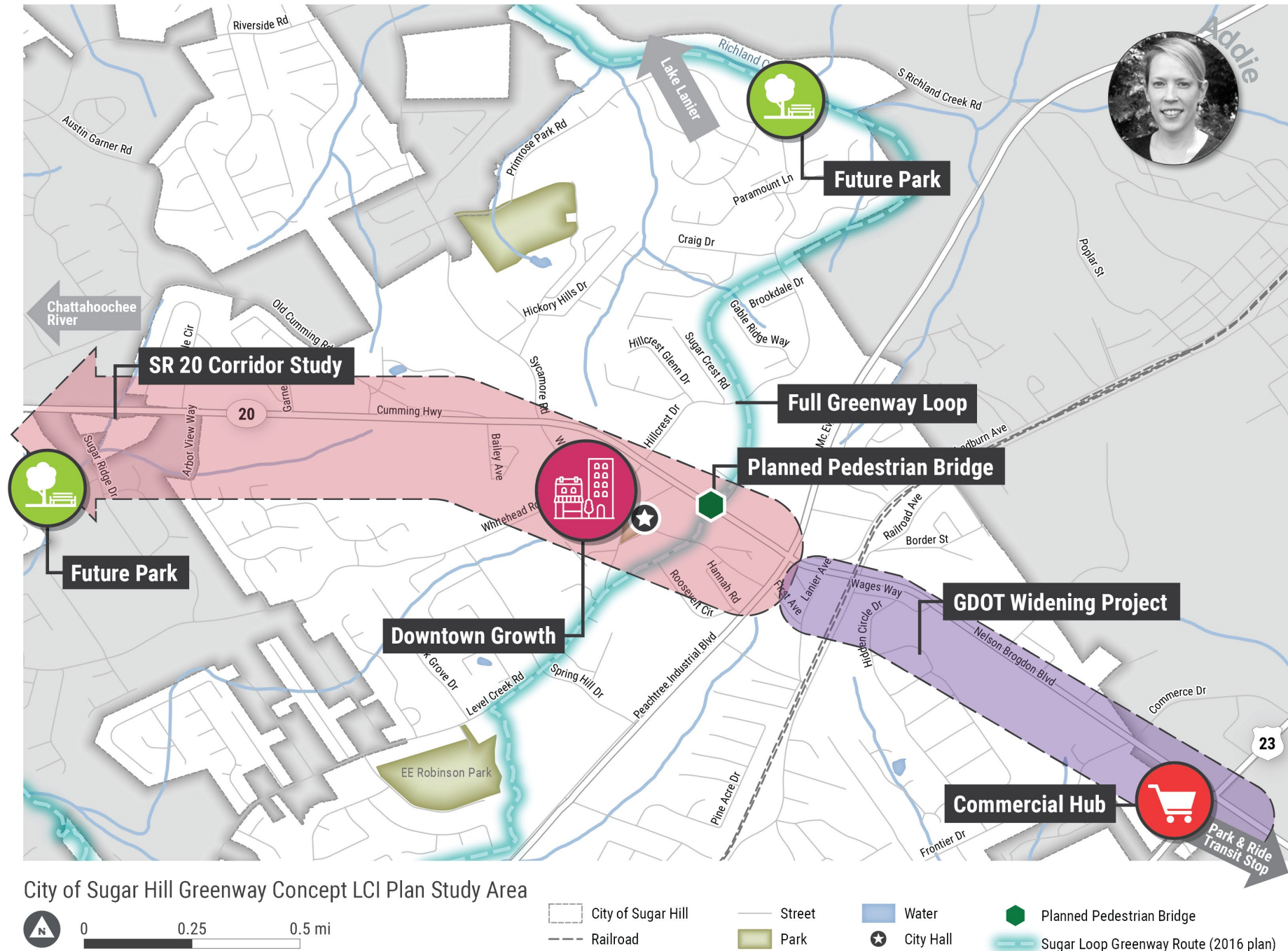
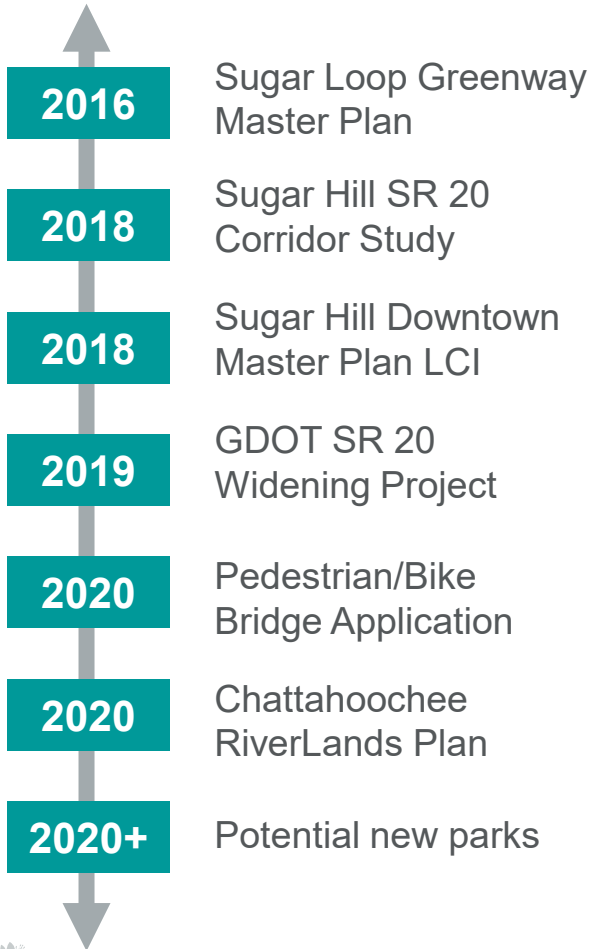


TOOLE
DESIGN



Addie

Background

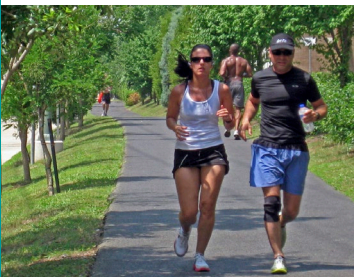


Study Area

~3 miles east to west (one way)



~60 min
walk



~30 min
run

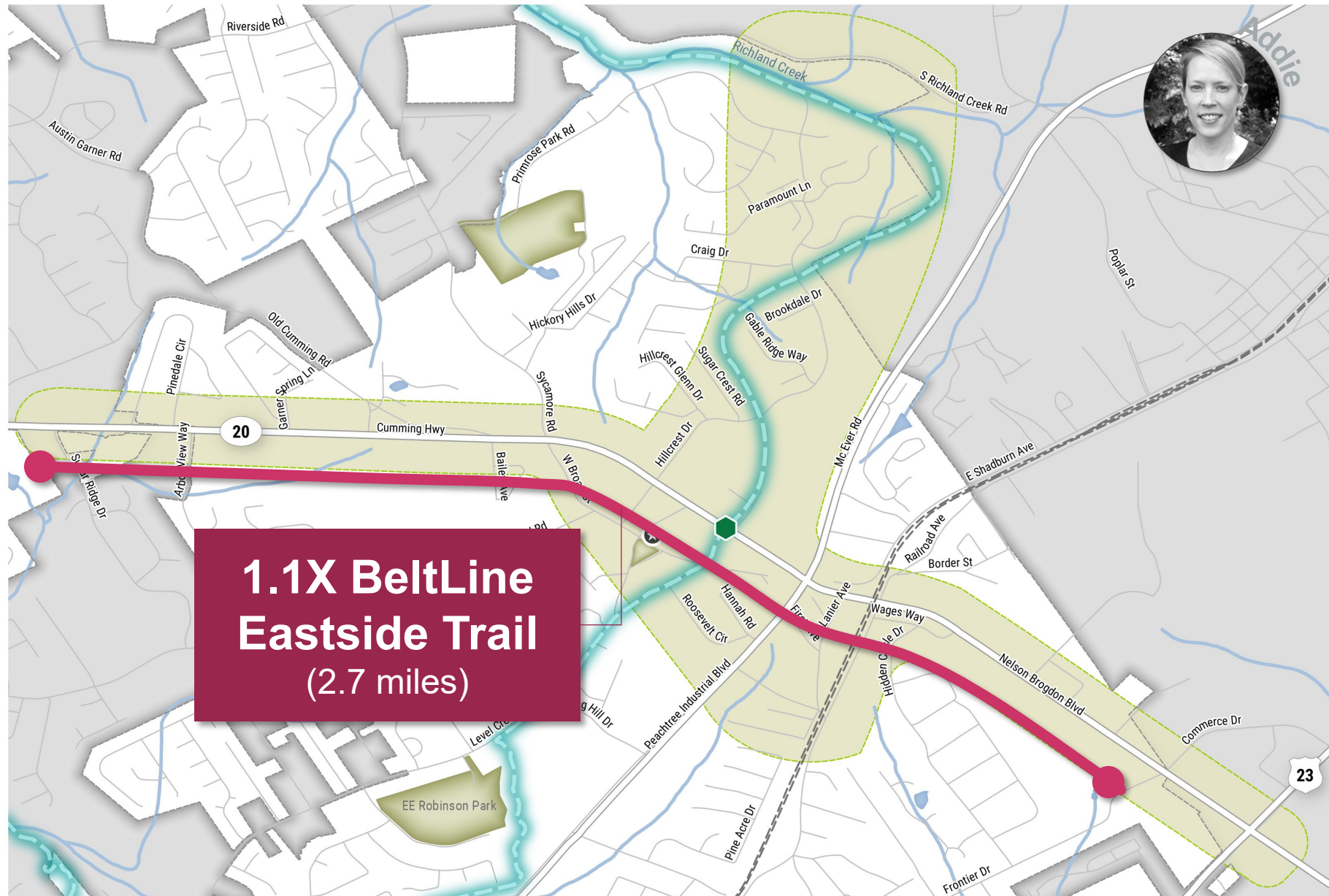


~20 min
bike

+1.3 miles north to south



TOOLE
DESIGN



Addie

Schedule

We are here

1

**Existing Conditions
and Technical
Analysis**



Virtual Open House #1



Online Community
Input Map



Core Team Meeting #1

2

**Route Selection
& Conceptual
Design**



Virtual Open House #2



Online Survey



Core Team Meeting #2

3

**Report &
Recommendations**



Contact us directly

Please note: Activities have shifted to virtual platforms due to COVID-19 protocols.



Addie

Guiding Principles

We will develop a **signature trail** amenity for Sugar Hill by:

1. Designing a **safe and comfortable** facility for users of all ages and abilities
2. Connecting community facilities and other useful **destinations**
3. Maximizing access to **nature**
4. Using existing **public land and ROW** as much as possible



TOOLE
DESIGN





TOOLE
DESIGN

Greenway Benefits & Features



7 min.

02



What are the benefits of greenways?



**Safe
Mobility**

Utilitarian Need



Physical



Mental



Economic



Environmental

Co-benefits



Jeff

Physical Health

Less than $\frac{1}{2}$ of adults living in the U.S. meet their recommended level of physical activity¹

Walking
and biking
help...²

Maintain healthy weight

Facilitate easy, affordable exercise

Strengthen bones

Lift mood

Prevent and manage conditions like heart disease, high blood pressure, and Type 2 diabetes



TOOLE
DESIGN

Sources: 1) Centers for Disease Control and Prevention
2) Mayo Clinic



Economic Health

Reduced personal
transportation
costs

Vibrant business
and tourism
environment

1

point increase in

**WALK
SCORE**

=

an average increase in
home price of \$3,250 or

+0.9% ¹



TOOLE
DESIGN

Sources: 1) RedFin (2016)

What makes a *great* greenway?

Designed for **everyone**

Connected to useful, fun,
and relaxing destinations

Activated and interesting

Part of a
low-stress system



Designed for Everyone

BICYCLIST DESIGN USER PROFILES

Interested but Concerned

51-56% of the total population

Often not comfortable with bike lanes, may bike on sidewalks even if bike lanes are provided; prefer off-street or separated bicycle facilities or quiet or traffic-calmed residential roads. May not bike at all if bicycle facilities do not meet needs for perceived comfort.

Somewhat Confident

5-9% of the total population

Generally prefer more separated facilities, but are comfortable riding in bicycle lanes or on paved shoulders if need be.

Highly Confident

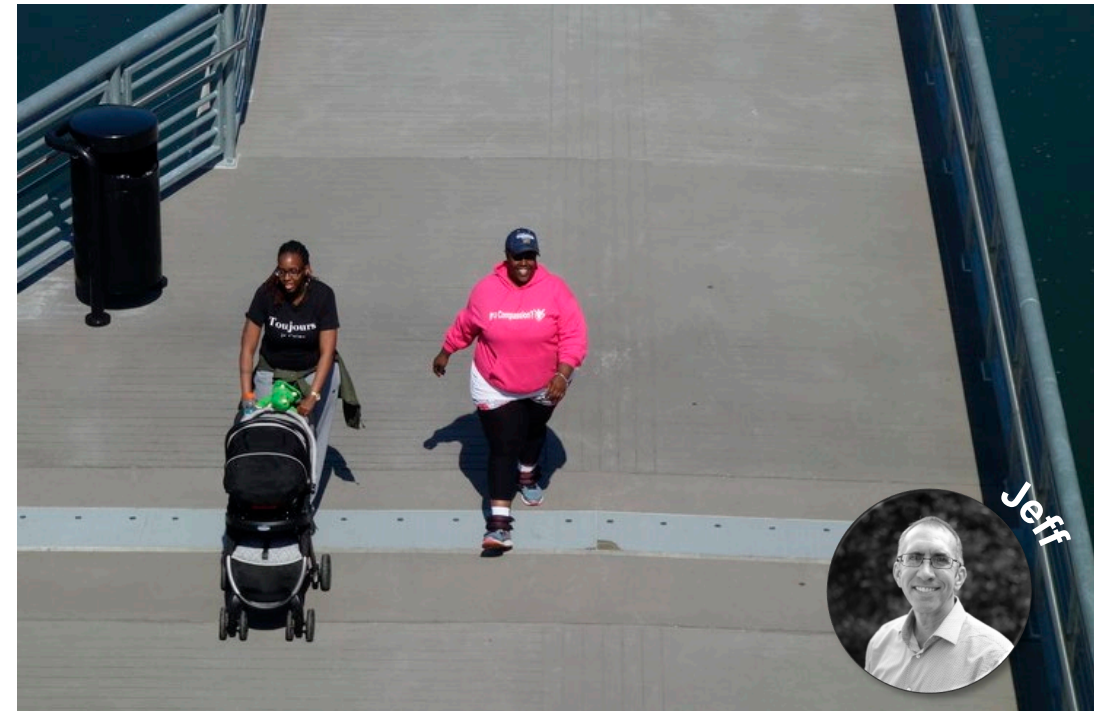
4-7% of the total population

Comfortable riding with traffic; will use roads without bike lanes.



**LOW STRESS
TOLERANCE**

**HIGH STRESS
TOLERANCE**



TOOLE
DESIGN



Jeff

Connected to Destinations

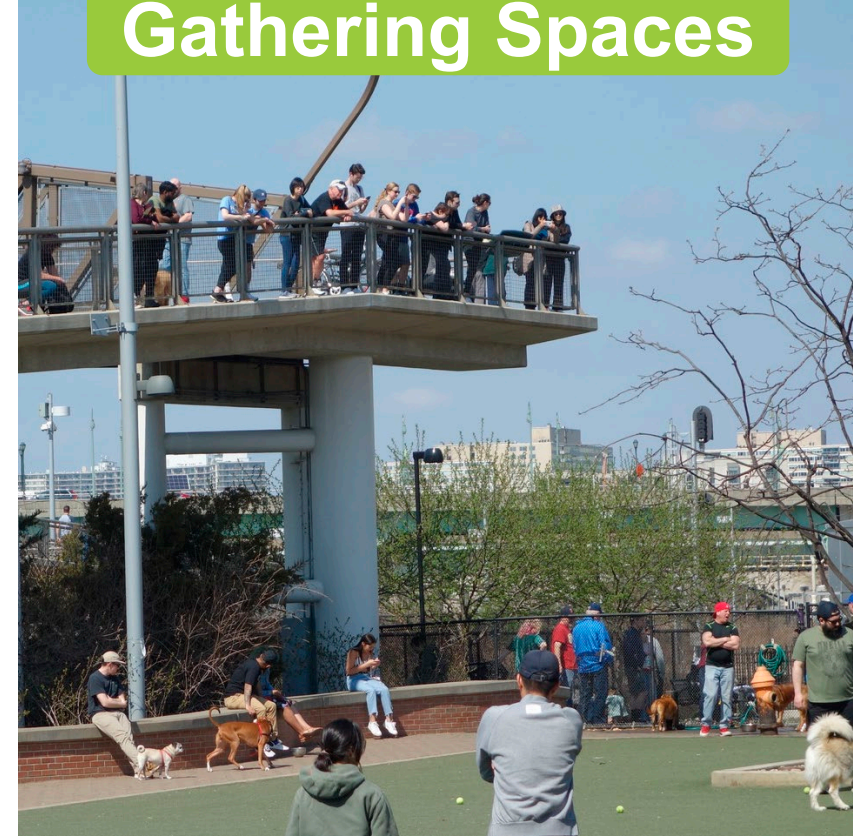
Nature



Businesses



Gathering Spaces



TOOLE
DESIGN



Activated and Interesting



Low-Stress System



Safe



Comfortable



Connected



Easy to Understand



TOOLE
DESIGN



When we say “Sugar Hill Greenway”...

PREFERRED

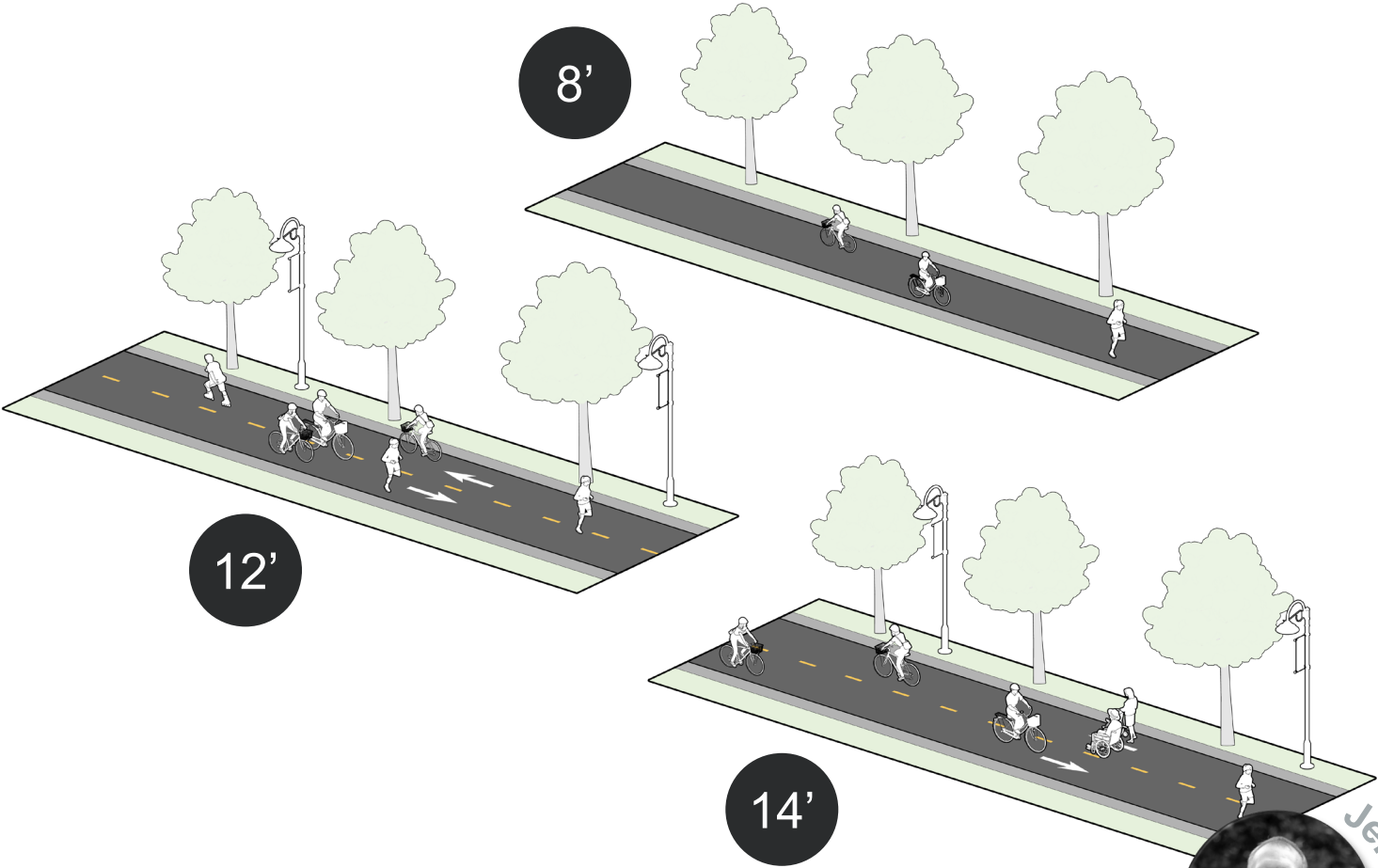


Trail



Side Path

10- to 14-foot Shared Use Paths



Jeff

When we say “Sugar Hill Greenway”...

PREFERRED



Trail

Side Path

10- to 14-foot Shared Use Paths



AS NEEDED



Sidewalk

Buffered Bike Lane

Bike Lane

Bike Boulevard



TOOLE
DESIGN



Go to www.menti.com and use the code 95 05 46

What makes a great greenway to you?

Press **ENTER** to pause scroll





TOOLE
DESIGN

Critical Challenges & Alternative Routes

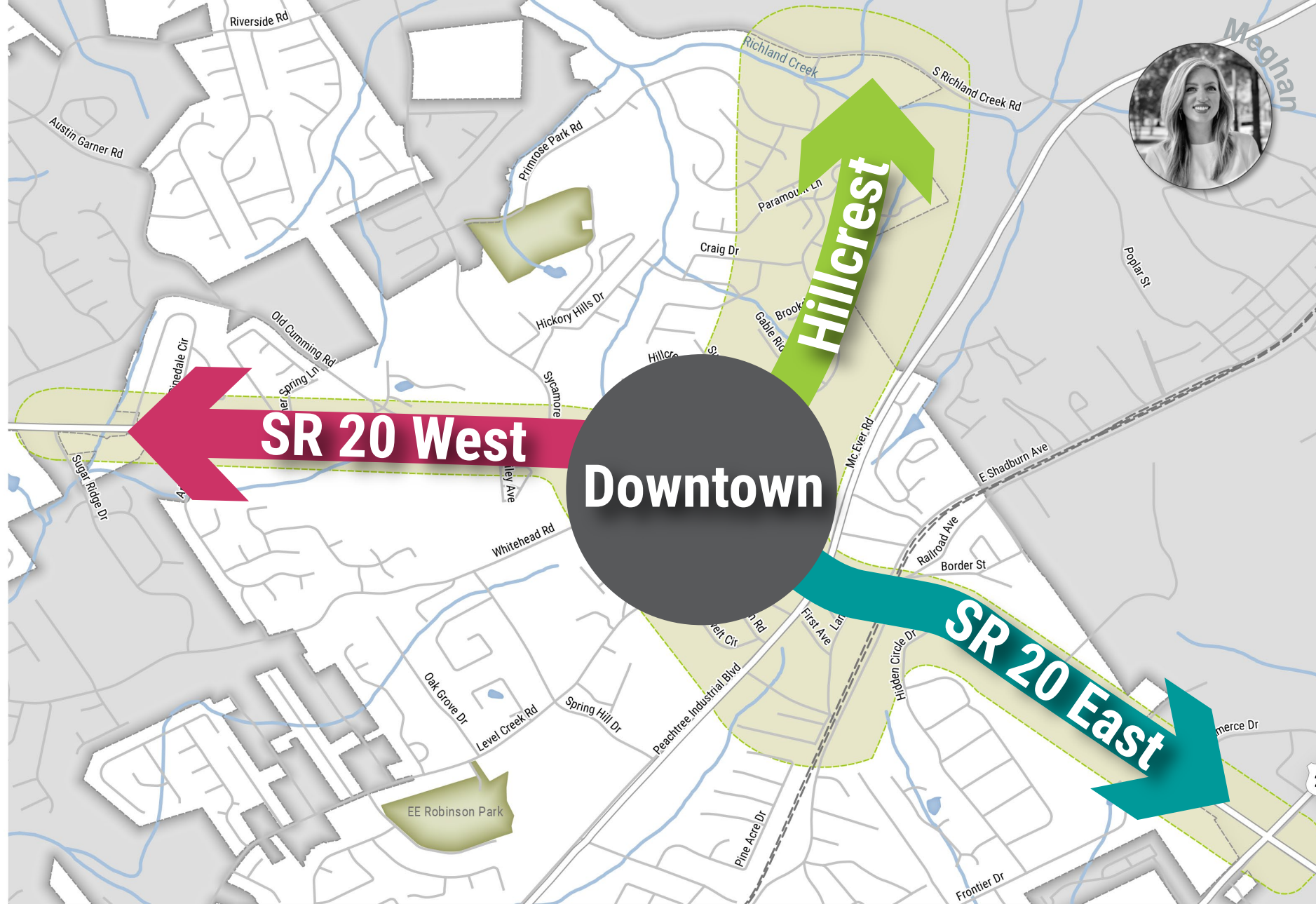
03



24 min.



Project Segments



TOOLE
DESIGN



0 0.25 0.5 mi

Study Area

City of Sugar Hill

Railroad

Street

Park

Water

City Hall

Project Segments

SR 20 West

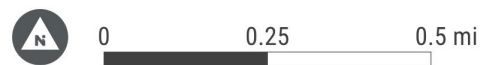
Hillcrest

Downtown

SR 20 East



TOOLE
DESIGN



- Study Area
- City of Sugar Hill
- Railroad

- Street
- Park
- Water

- City Hall
- Route 1.1
- Route 1.2

- Route 1.3
- Route 1.4
- Route 1.1

- Route 2.2
- Route 2.3
- Route 3.1

- Route 3.2
- Route 3.3
- Route 3.4

- Route 3.5
- Route 3.6

Route Selection Considerations

User Comfort and Safety

Vehicular Traffic Speed, Volume, and Proximity
Shade | Hills | Intended Users



Access to Destinations

Homes | Businesses | Schools | Parks
Healthcare | Community Facilities

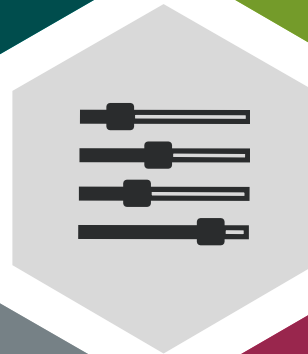


Available Right-of-way

Ownership | Physical Obstacles



Constructability



Topography

Hills | Rivers/Streams | Barriers

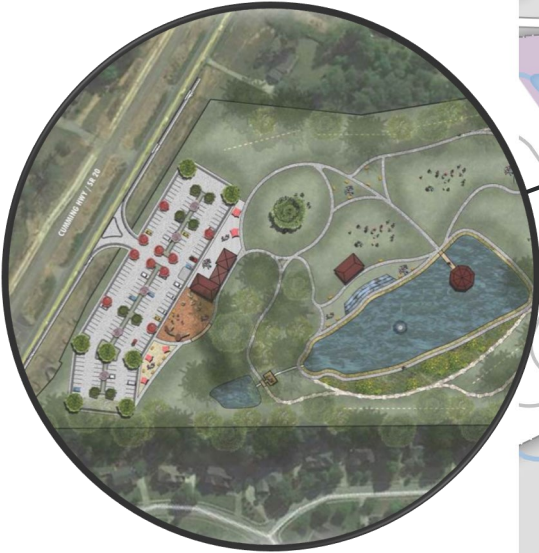


Estimated Cost

Property Acquisition | Bridges
Facility Type



SR 20 West: Overview



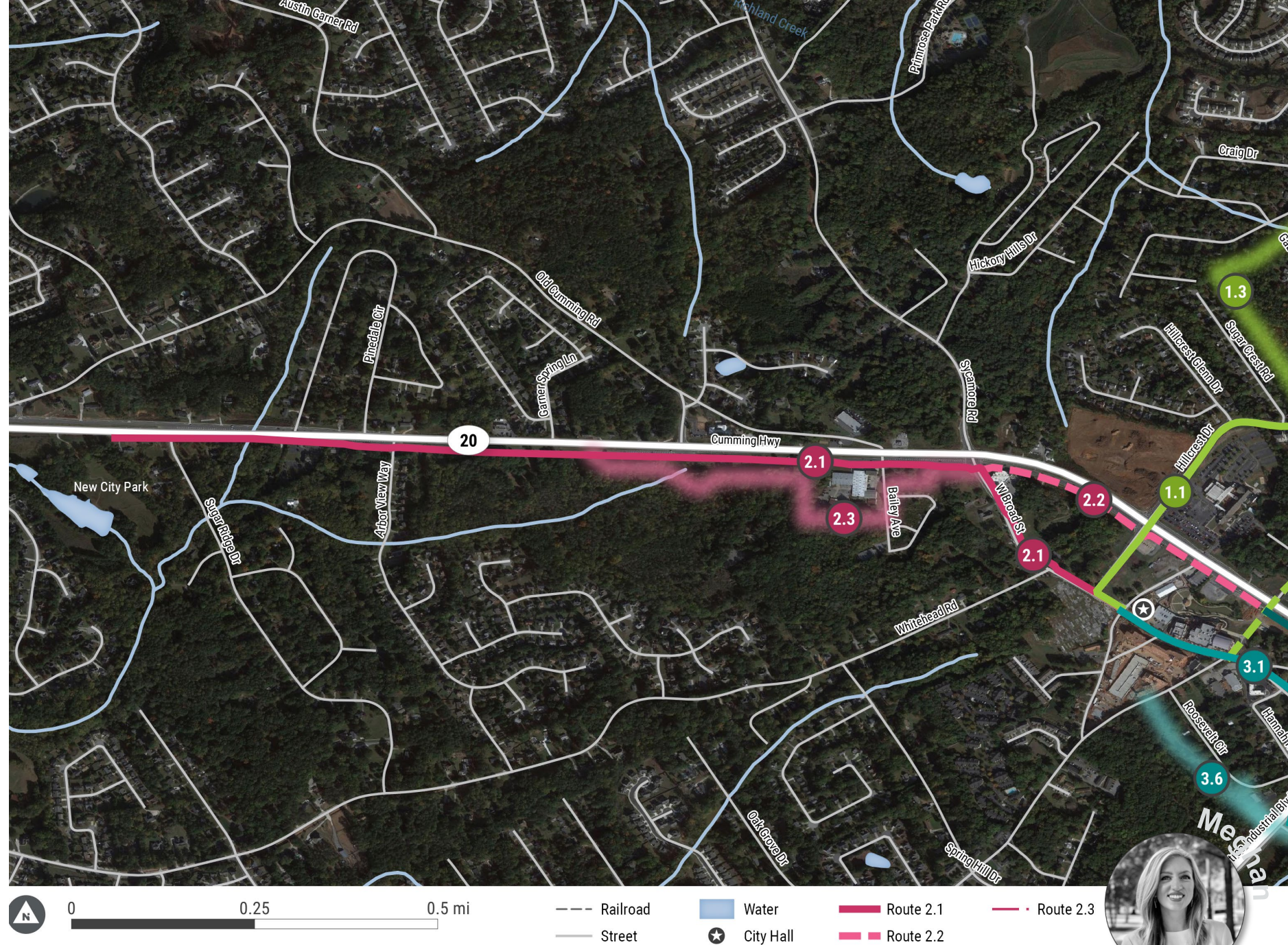
- Railroad
- Street
- Water
- City Hall
- Park
- City-owned Parcels
- Destinations

SR 20 West: Critical Challenges

- High traffic volumes and speeds
- Narrow ROW
- Creeks, ditches, and drainage
- Limited crossings



SR 20 West: Alternative Routes



TOOLE
DESIGN



Downtown: Overview



TOOLE
DESIGN



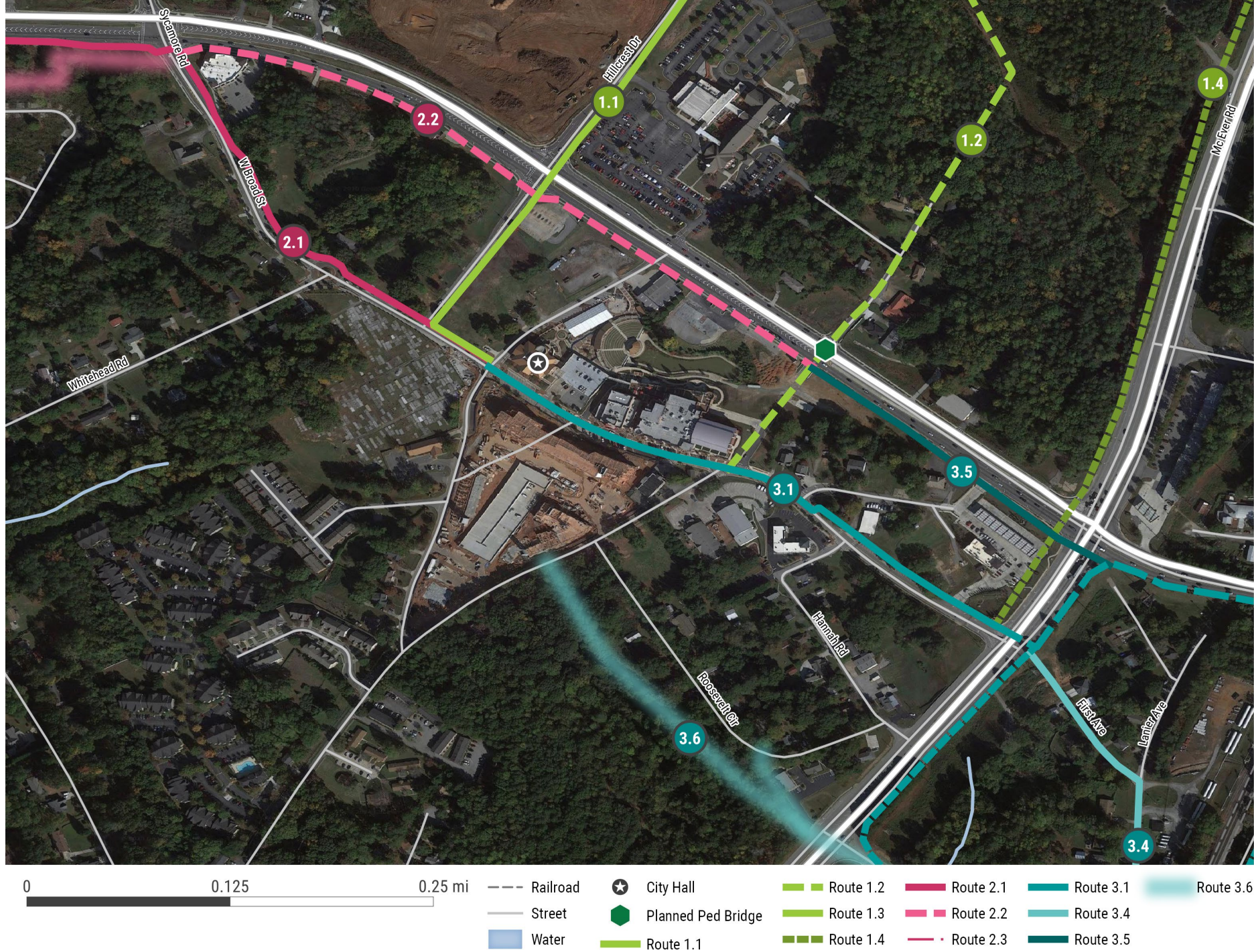
Ashley
McEver Rd

Downtown: Critical Challenges

- Narrow ROW
- Side street conflict points
- On-street parking
- Relatively new streetscape
- Ped bridge integration
- Alton Tucker Blvd/Peachtree Industrial Blvd intersection



Downtown: Alternative Routes



TOOLE
DESIGN

Hillcrest: Overview



Hillcrest Drive: Critical Challenges

- Hillcrest Dr intersection
- Steep slope between Shire Village Dr and Primrose Park Rd
- Narrow ROW sections
- Topography near Richland Creek
- Stormwater and utility conflicts



Hillcrest Corridor:

Alternative Routes



TOOLE
DESIGN



Meghan

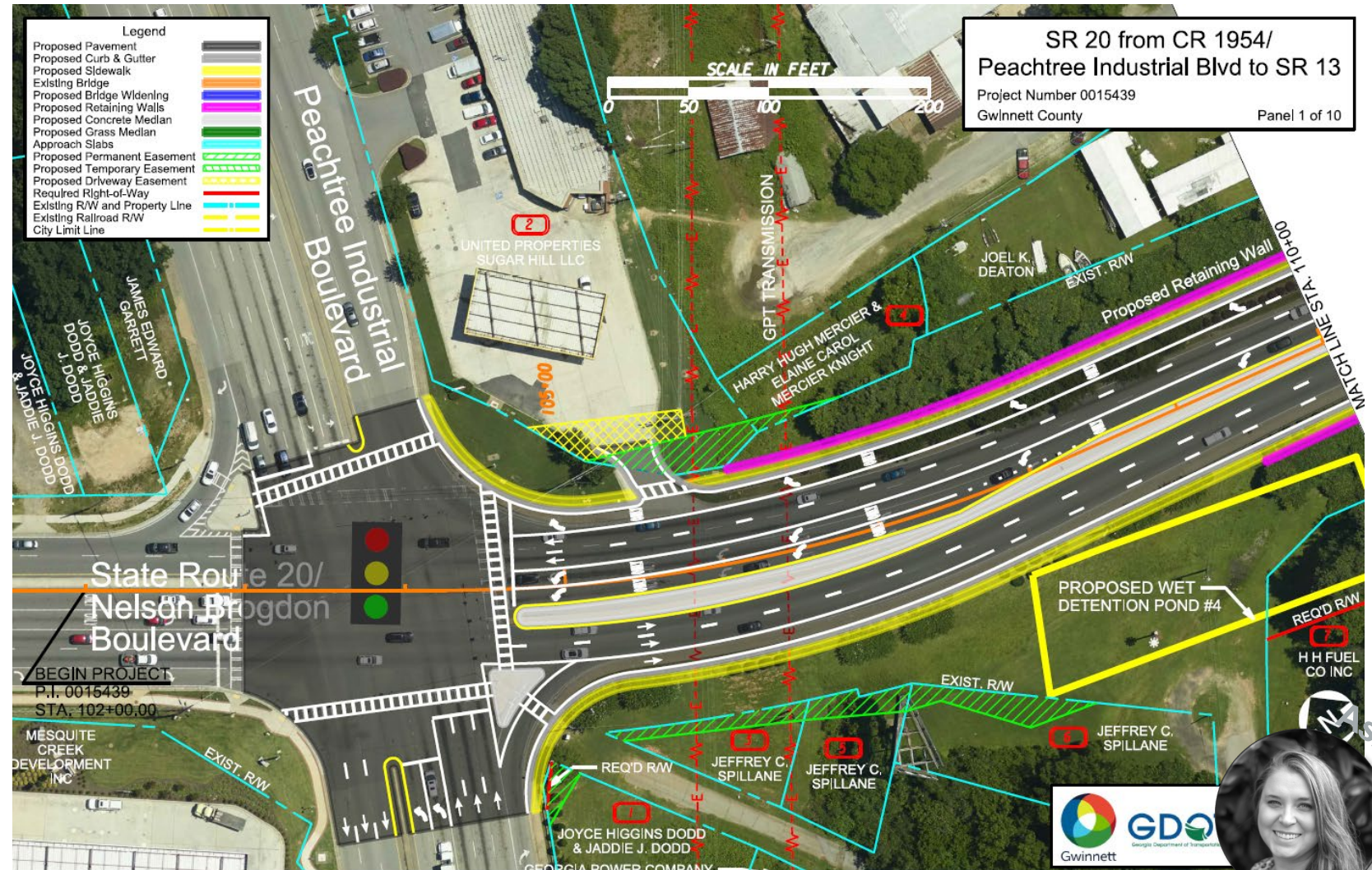
SR 20 East: Overview



TOOLE
DESIGN

SR 20 East: GDOT SR 20 Widening Project

- Peachtree Industrial Blvd to Buford Hwy
- Currently in design
- 5' sidewalks on bridge
- Retaining walls

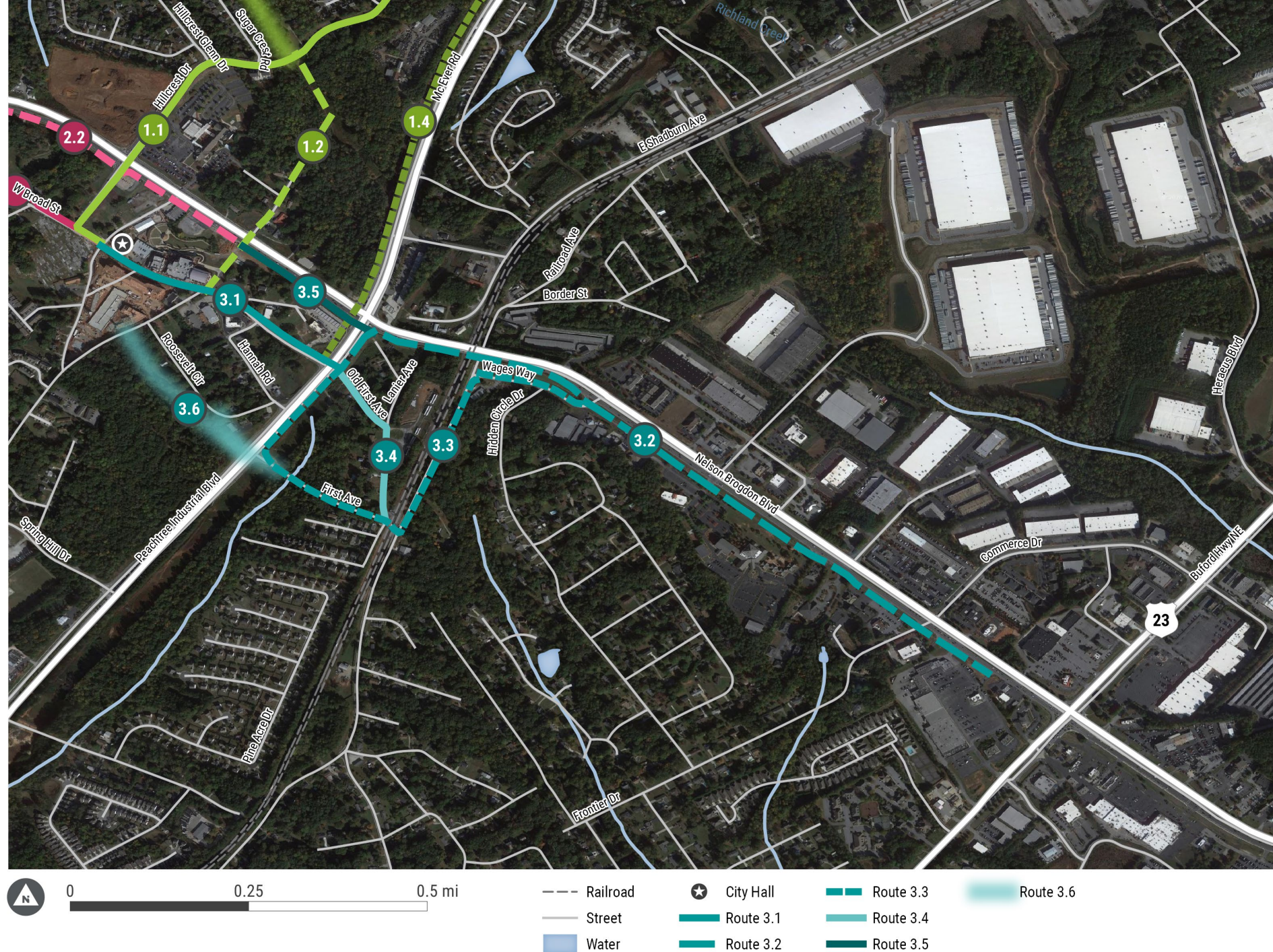


SR 20 East: Critical Challenges

- Bridge/ railroad crossing
- GDOT coordination
- Peachtree Industrial Blvd intersection
- Frontier Dr sight lines
- High traffic volumes and speeds



SR 20 East: Alternative Routes



TOOLE
DESIGN



TOOLE
DESIGN

Q&A



15 min.

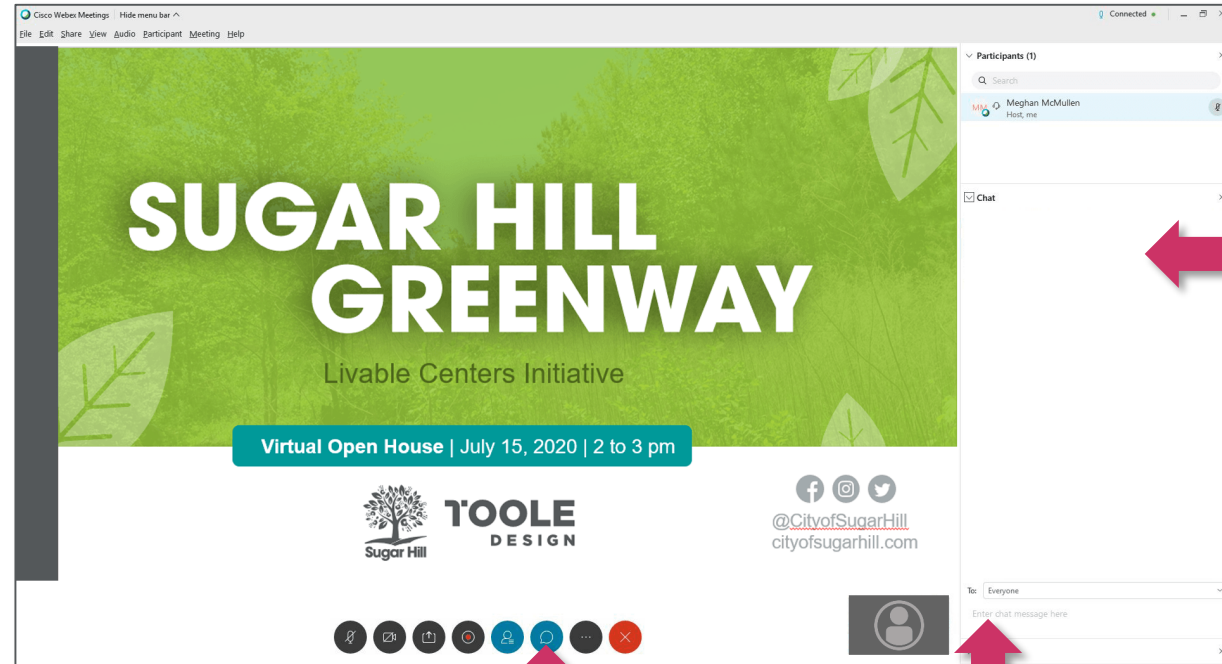
04



How to Participate



Submit your
questions and
comments in the
chat box!



① Click to **open** chat box, if hidden.

② **Type** your
comments here
and hit “enter” to
send.

③ **Read**
comments
here in the
chat box.





What questions or ideas do you have about this phase of the Sugar Hill Greenway?

Potential Topics

Feature/amenity ideas

Destination requests

Areas of concern

Preferred routes

Art installations



Submit your comments using the WebEx chat box!



TOOLE
DESIGN

Community Input Map Tutorial



5 min.

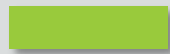
05



Community Input Map



Routes I currently walk or bike



Routes I would like to walk or bike, if it was more comfortable or safe



Places I'd like to walk or bike to



Ideas for greenway features



Issue spots for walking or biking



Meghan

wikimapping.com/sugarhillgreenway1.html

Demonstration

Demonstration video



TOOLE
DESIGN



TOOLE
DESIGN

Wrap-up and Next Steps



3 min.

06



Next Steps



@CityofSugarHill



Community Input Map

wikimapping.com/sugarhillgreenway1.html

Now through July 26th



Online Survey

Early August



Virtual Open House #2

August 13th



Draft Concept

End of August

cityofsugarhill.com/sugarhilltrail

Questions or comments? Email Kaipo at kawana@cityofsugarhill.com



Addie



Thank you for joining!

**The Virtual Open House has concluded.
Staff will remain on the line to respond
to additional questions.**



Submit your comments using the WebEx chat box
or click “raise hand” to request to speak.

Helpful Links

PROJECT SITE

cityofsugarhill.com/sugarhilltrail

COMMUNITY INPUT MAP

[wikimapping.com/
sugarhillgreenway1.html](http://wikimapping.com/sugarhillgreenway1.html)

EMAIL

Kaipo Awana, Planning Director
kawana@cityofsugarhill.com

SOCIAL MEDIA



@CityofSugarHill