

DATE: February 26, 2025  
 TO: Mayor and City Council  
 FROM: Assistant City Manager  
 SUBJECT: Contract Award:  
 2025 Roadway Improvements Project (LMIG)  
 Project # 25-003



**RECOMMENDED ACTION**

Award the construction agreement with Triple R Paving and Construction, LLC of Morrow, Ga in the amount of \$862,860.00 for the completion of the 2025 Roadway Improvements Project and authorization of the Mayor to sign the contract.

**BUDGET IMPACT**

The funds for the project have been budgeted in this year’s Capital Improvement Plan with the sources being a combination of state grant money, general funds, and local SPLOST money totaling \$1,000,000. The state has already issued funds totaling just over \$252,007.46 toward the resurfacing project. An additional \$750,000 is programmed to come from SPLOST funds. A supplemental grant budget is forthcoming from the state and can be used to provide an amended scope should the Council wish to approve later in the year.

**DISCUSSION**

Bid documents for the project were drafted in-house and advertised in January. Ads were placed in the legal organ twice, in accordance with state contracting law for road projects, as well as on our website and the Georgia Procurement Registry continuously during the bid period. Seventeen (17) prospective contractors picked up bid documents while one plan room helped advertise the opportunity.

Bids were received on February 6, meeting the advertising regulations in place for this type of project. A total of thirteen (13) bids were received. One was considered non-responsive as they used the wrong bid form (East Coast Grading, Inc.).

	<b>BIDDER</b>	<b>BID TOTAL</b>
<b>1</b>	<b>Allied</b>	<b>\$1,035,267.50</b>
<b>2</b>	<b>Baldwin Paving Co., Inc.</b>	<b>\$1,290,457.00</b>
<b>3</b>	<b>Blount Construction Co., Inc.</b>	<b>\$1,143,111.00</b>
<b>4</b>	<b>C. W. Matthews Contracting, Co.</b>	<b>\$1,109,056.99</b>
<b>5</b>	<b>East Coast Grading, Inc.</b>	<b>\$978,300.00</b>

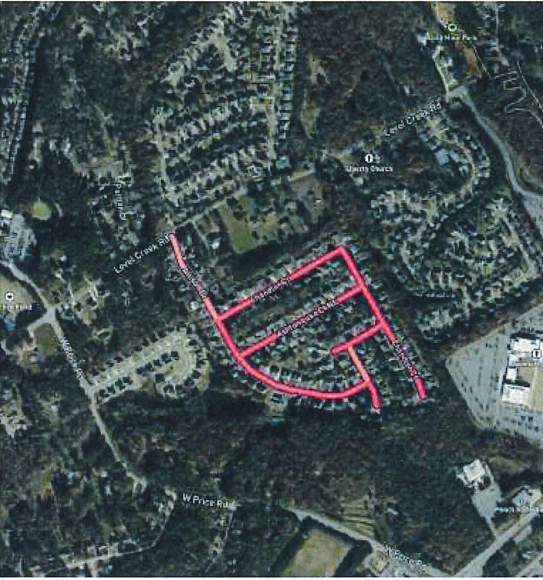
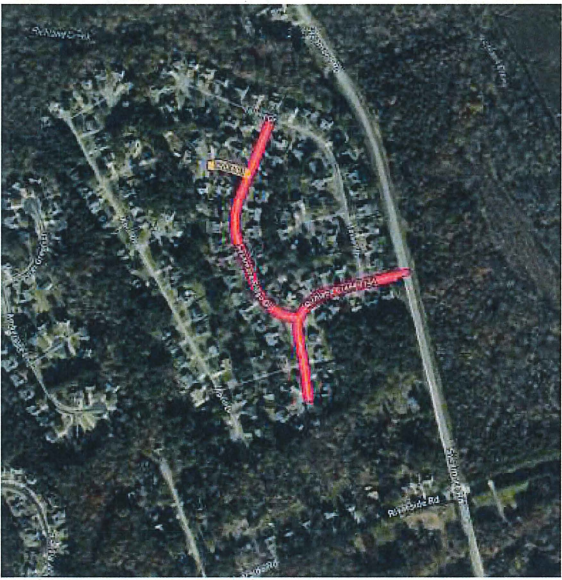
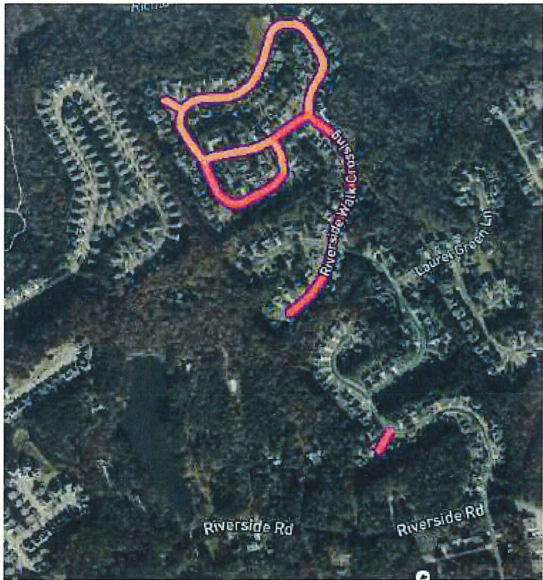
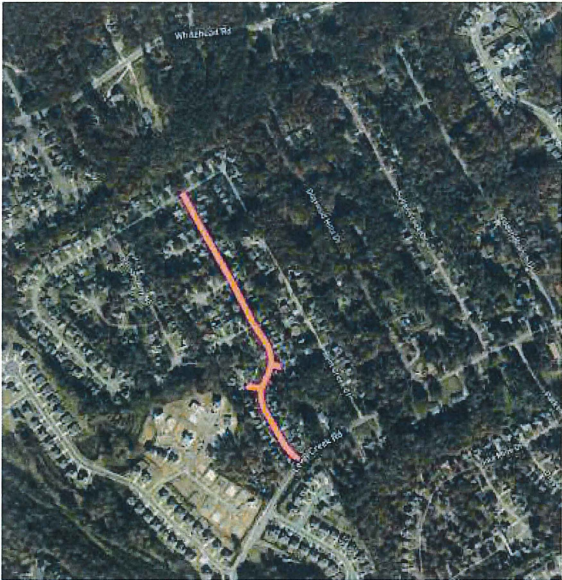
<b>6</b>	<b>Garrett Paving Co., Inc.</b>	<b>\$1,056,084.99</b>
<b>7</b>	<b>Georgia Paving, LLC</b>	<b>\$968,123.00</b>
<b>8</b>	<b>Magnum Paving</b>	<b>\$1,186,670.00</b>
<b>9</b>	<b>ShepCo Paving, INC.</b>	<b>\$979,032.72</b>
<b>10</b>	<b>Summit Const. and Development</b>	<b>\$1,120,600.00</b>
<b>11</b>	<b>Sunbelt Asphalt</b>	<b>\$1,071,736.00</b>
<b>12</b>	<b>Triple R Paving and Construction, LLC</b>	<b>\$862,860.00</b>
<b>13</b>	<b>Vertical Earth, INC.</b>	<b>\$1,274,050.23</b>

After reviewing the bids submitted and verifying the calculations on each pay item, staff determined the apparent low bidder to be Triple R Paving and Construction, LLC. After confirmation of their qualifications and pay items, staff is ready to recommend award of the construction contract as bid to Triple R Paving and Construction, LLC in the amount of \$862,860.00. Staff recommends approval of the award and authorizing the Mayor to sign the agreement.

These fifteen (15) roads, representing 3.1 miles, are proposed for repairs under this contract:

	Road Name	From	To	Length (Feet)	width (ft)	Length (Miles)	Description of Work	Project Let Date
1	Shelley Lane	Level Creek Rd	Maltdie	1941	24	0.37	Edge Milling, Crack Fill, Overlay, Patching, MH adjustment	April-25
2	Hidden Springs Ct	Shelley Lane	cul de sac	88	24	0.02	Edge Milling, Crack Fill, Overlay, Patching, MH adjustment	April-25
3	Shelley Ct	Shelley Lane	cul de sac	64	24	0.01	Edge Milling, Crack Fill, Overlay, Patching, MH adjustment	April-25
4	Riverside Walk Crossing	cul de sac	Riverside Run Ln	4150	24	0.79	Edge Milling, Crack Fill, Overlay, Patching, MH adjustment	April-25
5	Riverside Run Ct	Riverside Walk Cross	cul de sac	124	24	0.02	Edge Milling, Crack Fill, Overlay, Patching, MH adjustment	April-25
6	Riverside Run Lane	Riverside Walk Cross	Riverside Walk Cross	681	24	0.13	Edge Milling, Crack Fill, Overlay, Patching, MH adjustment	April-25
7	River Ridge Ct	River Ridge Ln	cul de sac	147	24	0.03	Edge Milling, Crack Fill, Overlay, Patching, MH adjustment	April-25
8	Richland Creek Trail	Sycamore Rd	cul de sac	954	24	0.18	Edge Milling, Crack Fill, Overlay, Patching, MH adjustment, Valve Adjustment	April-25
9	Sycamore Ridge Dr	Richland Creek Trl	Tallant Dr	1089	24	0.21	Edge Milling, Crack Fill, Overlay, Patching, MH adjustment, Valve Adjustment	April-25
10	Sadie Ct	Sycamore Ridge Dr	cul de sac	192	24	0.04	Edge Milling, Crack Fill, Overlay, Patching, MH adjustment, Valve Adjustment	April-25
11	Allison Dr	Level Creek Rd	Kiplin Lake Ct	2183	24	0.41	Edge Milling, Crack Fill, Overlay, Patching, MH adjustment, Valve Adjustment	April-25
12	Chandler Ct	Allison Dr	cul de sac	2409	24	0.46	Edge Milling, Crack Fill, Overlay, Patching, MH adjustment, Valve Adjustment	April-25
13	Kiplin Lake Ct	Kirby Ct	cul de sac	535	24	0.10	Edge Milling, Crack Fill, Overlay, Patching, MH adjustment, Valve Adjustment	April-25
14	Ashton Lake Ct	Allison Dr	Chandler Ct	1098	24	0.21	Edge Milling, Crack Fill, Overlay, Patching, MH adjustment, Valve Adjustment	April-25
15	Kirby Ct	Chandler Ct	cul de sac	449	24	0.09	Edge Milling, Crack Fill, Overlay, Patching, MH adjustment, Valve Adjustment	April-25

Vicinity Map (FY25 LMIG Submittal)



###